

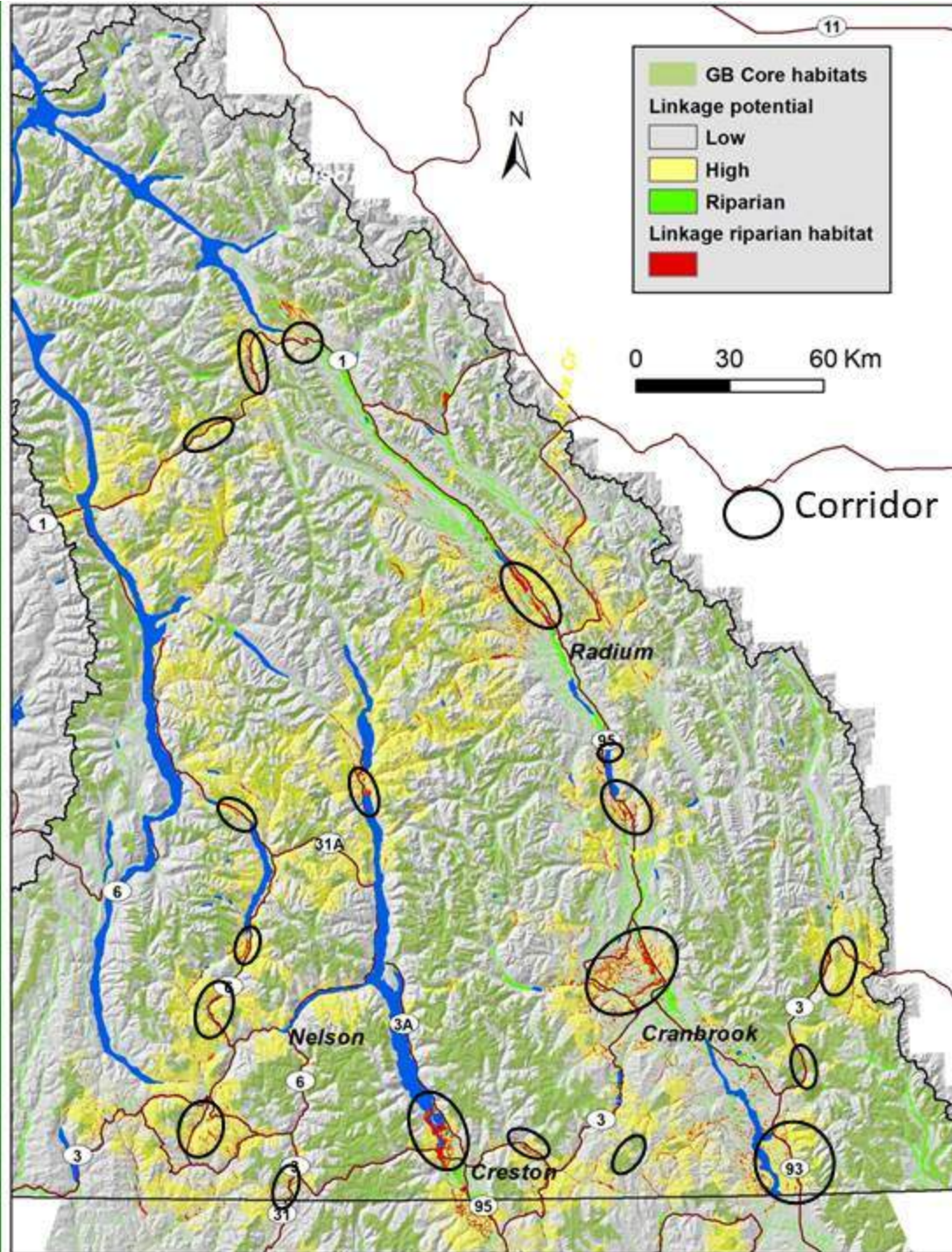
Proctor et al 2015

Grizzly bear connectivity mapping in the Canada-US trans-border region

- MICHAEL F. PROCTOR, *Broncho Ecological Ltd., P.O. Box 608 Kootenay, British Columbia, V0G 2M0, Canada*
- SCOTT E. NIELSEN, *Department of Renewable Resources, University of Alberta, Edmonton, T6G 2G9, Alberta*
- WAYNE F. KASIMOR, *US Fish and Wildlife Service, 285 Fish Hatchery Road, Libby, MT, 59922, USA*
- CHRIS SERRANDELL, *US Fish and Wildlife Service, College of Forestry and Conservation, 209 University Hall, University of Montana, Missoula, MT, 59812, USA*
- THOIVANG G. BACHNONG, *US Fish and Wildlife Service, 285 Fish Hatchery Road, Libby, MT, 59922, USA*
- A. GRANT MACHUTOWSKI, *817 Mill St. Nelson, British Columbia, V1L 4S8, Canada*
- MARK S. BOYCE, *Department of Biological Sciences, University of Alberta, Edmonton, Alberta, T6G 2G9, Canada*



Photo: proctor@broncho.com

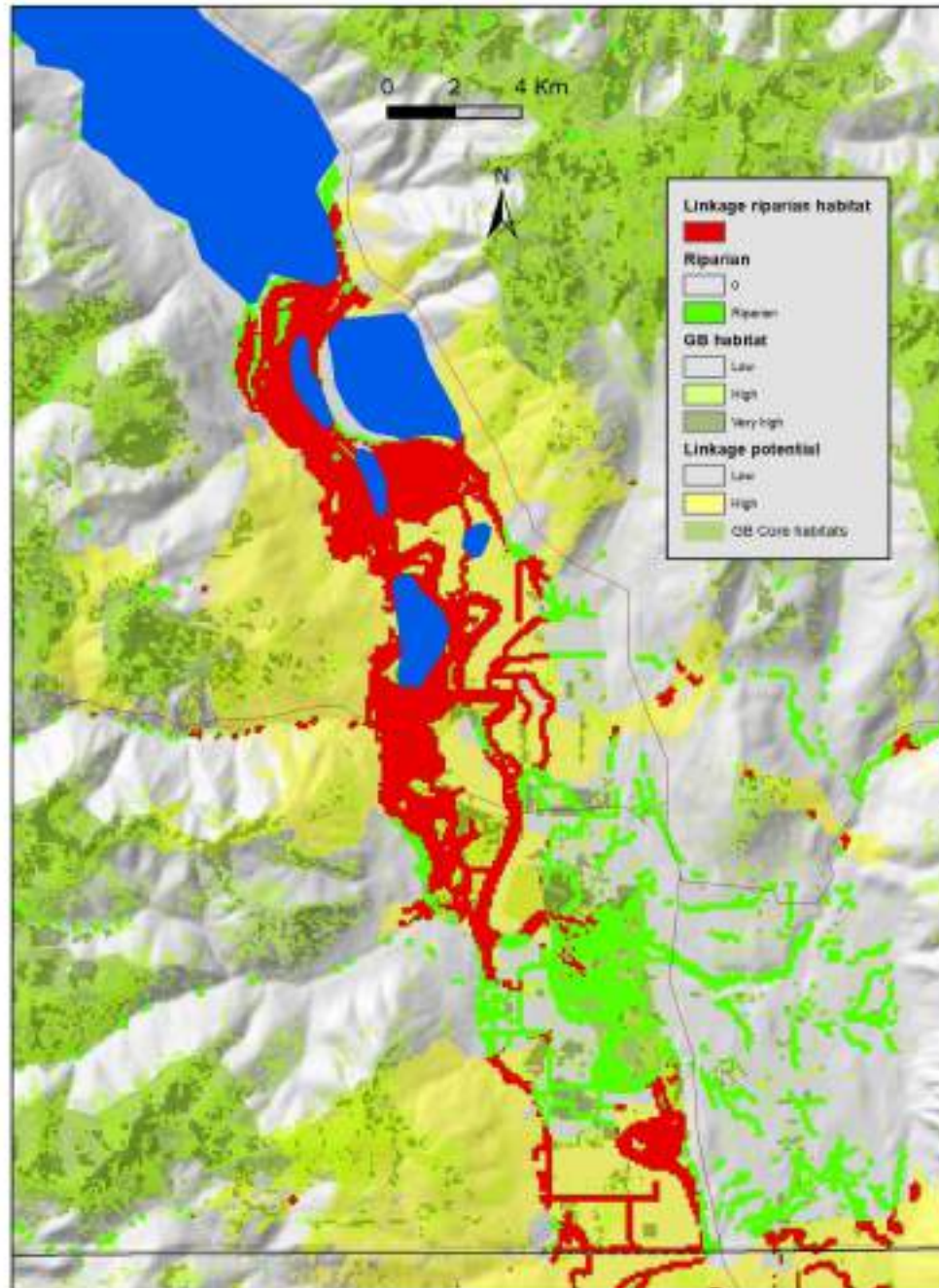


**Would like to see
established,
recognized,
managed,
quasi
protected/secured,
zoned
CONNECTIVITY
designation**

**A combination of
private and public
lands**

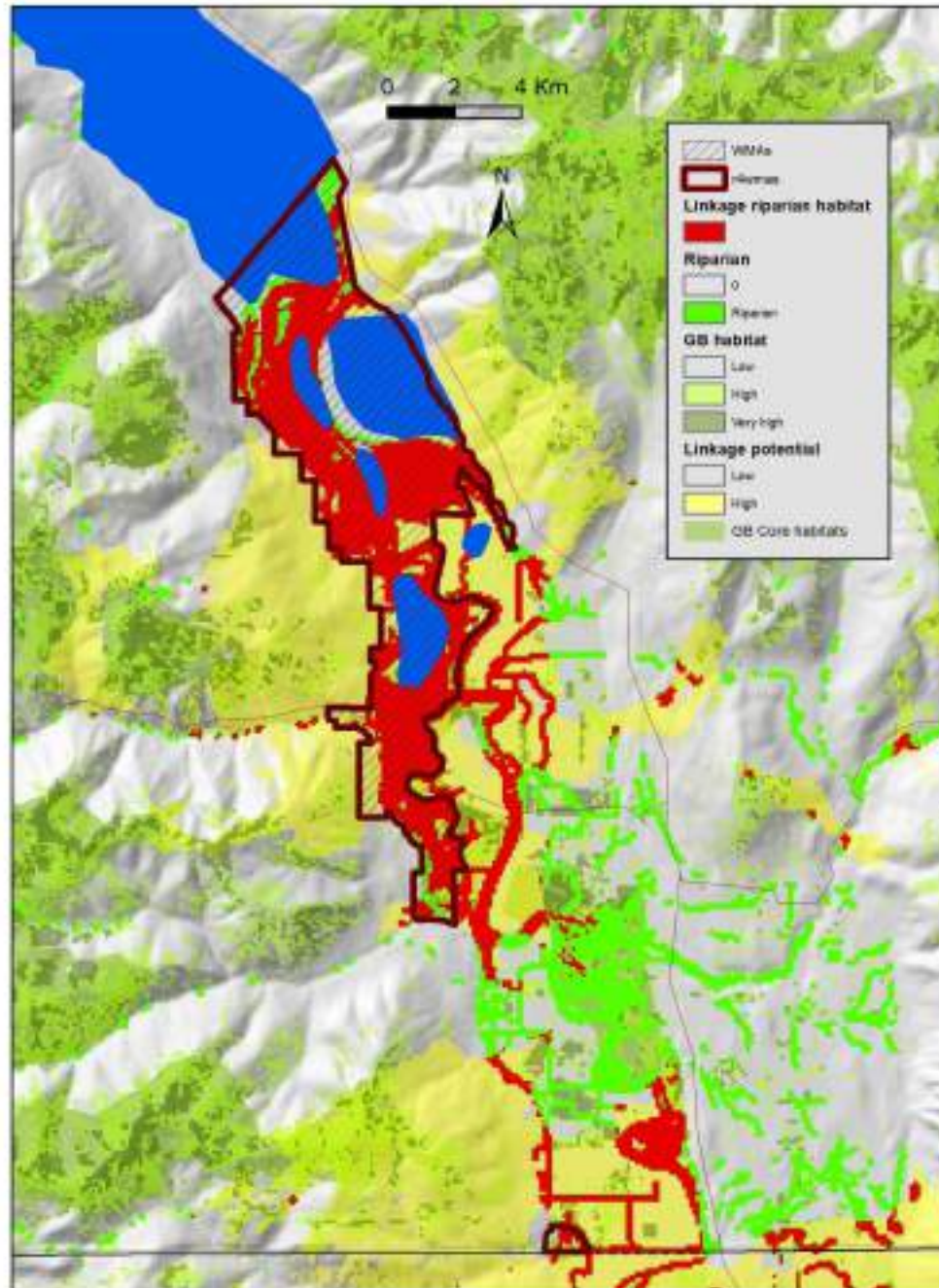
**Not a park
Public lands could
have some official
designation
Larger area could
be a looser
designation that
allowed private
lands to exist
within**

A MOSIAC of land ownership



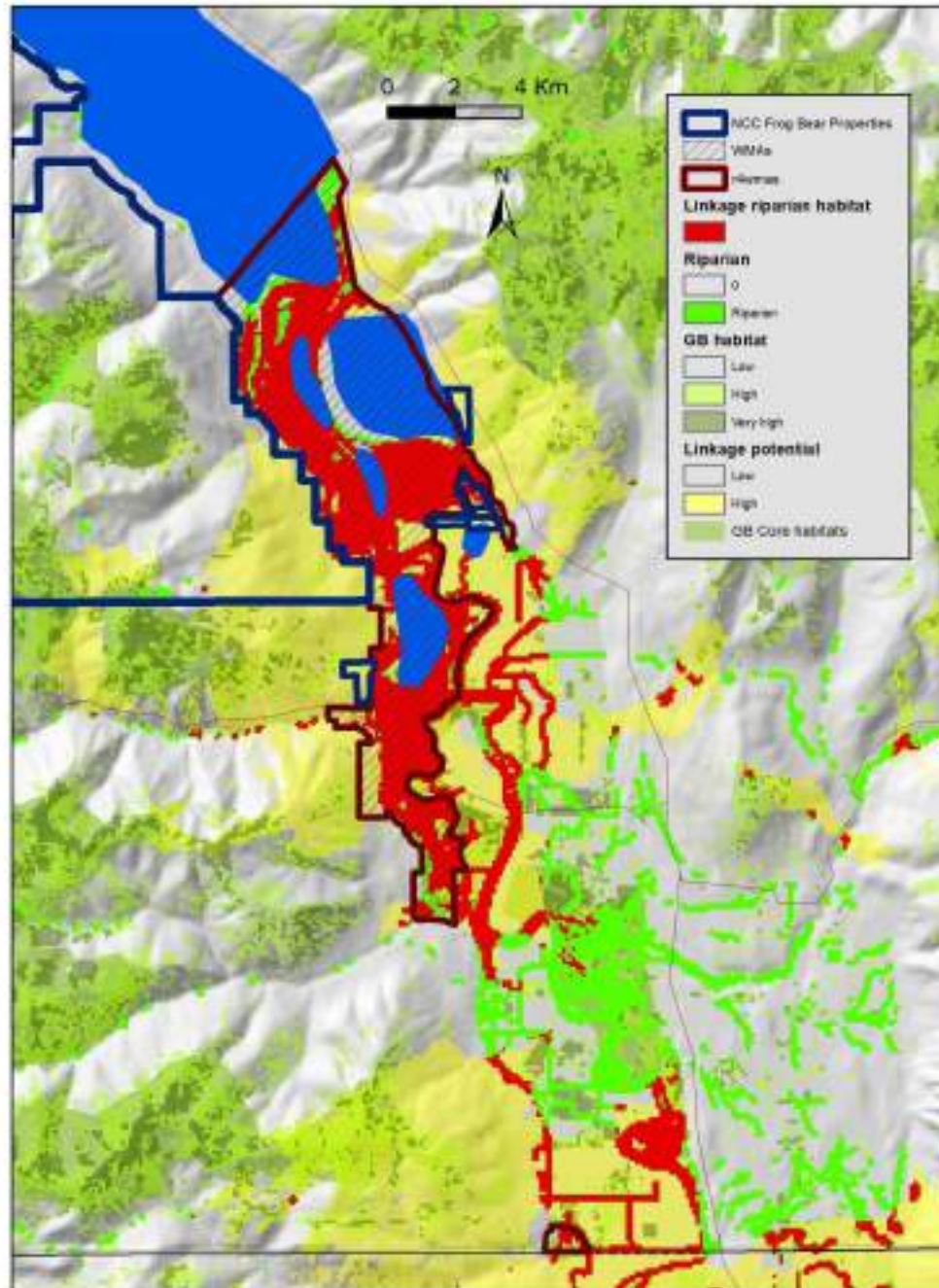
**A MOSIAC of
land
ownership**

**May require a
MOSAIC of
conservation
strategies**



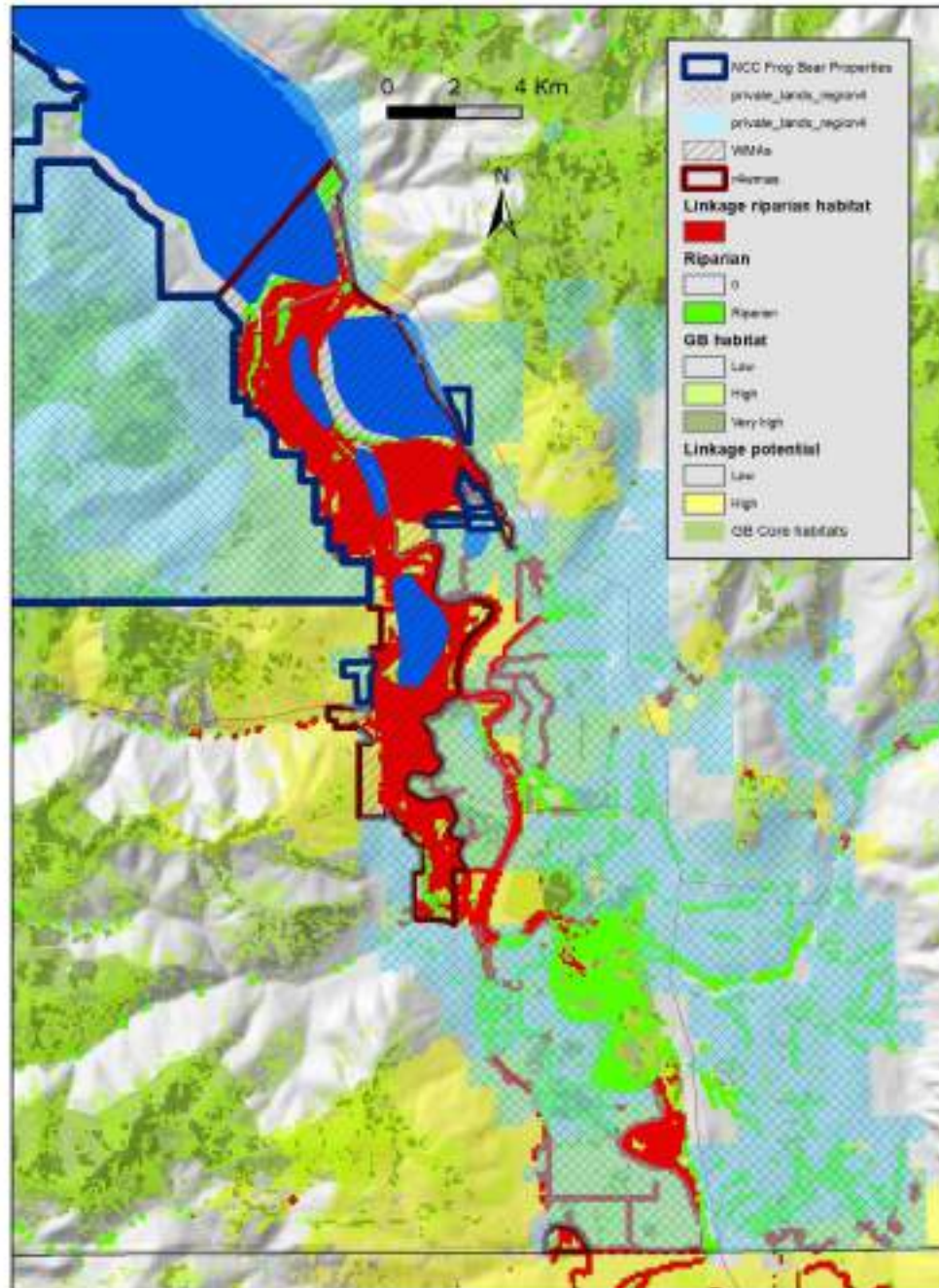
**A MOSIAC of
land
ownership**

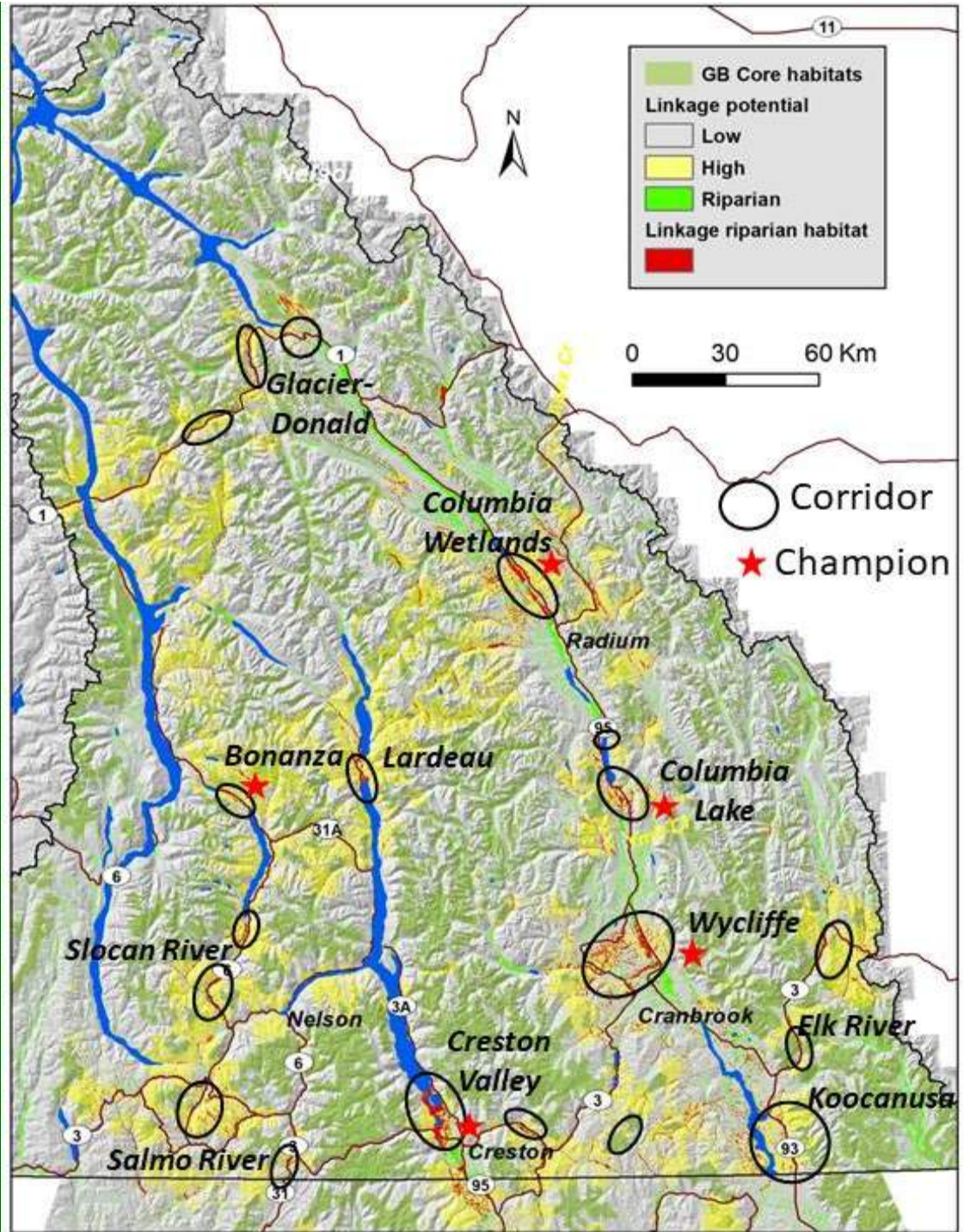
**May require a
MOSAIC of
conservation
strategies**



**A MOSIAC of
land
ownership**

**May require a
MOSAIC of
conservation
strategies**





Kootenay Connect: Riparian Wildlife Corridors for Climate Change

A Preliminary Report



Michael Proctor, PhD and Marcy Mahr, MSc

Prepared for Kootenay Conservation Program

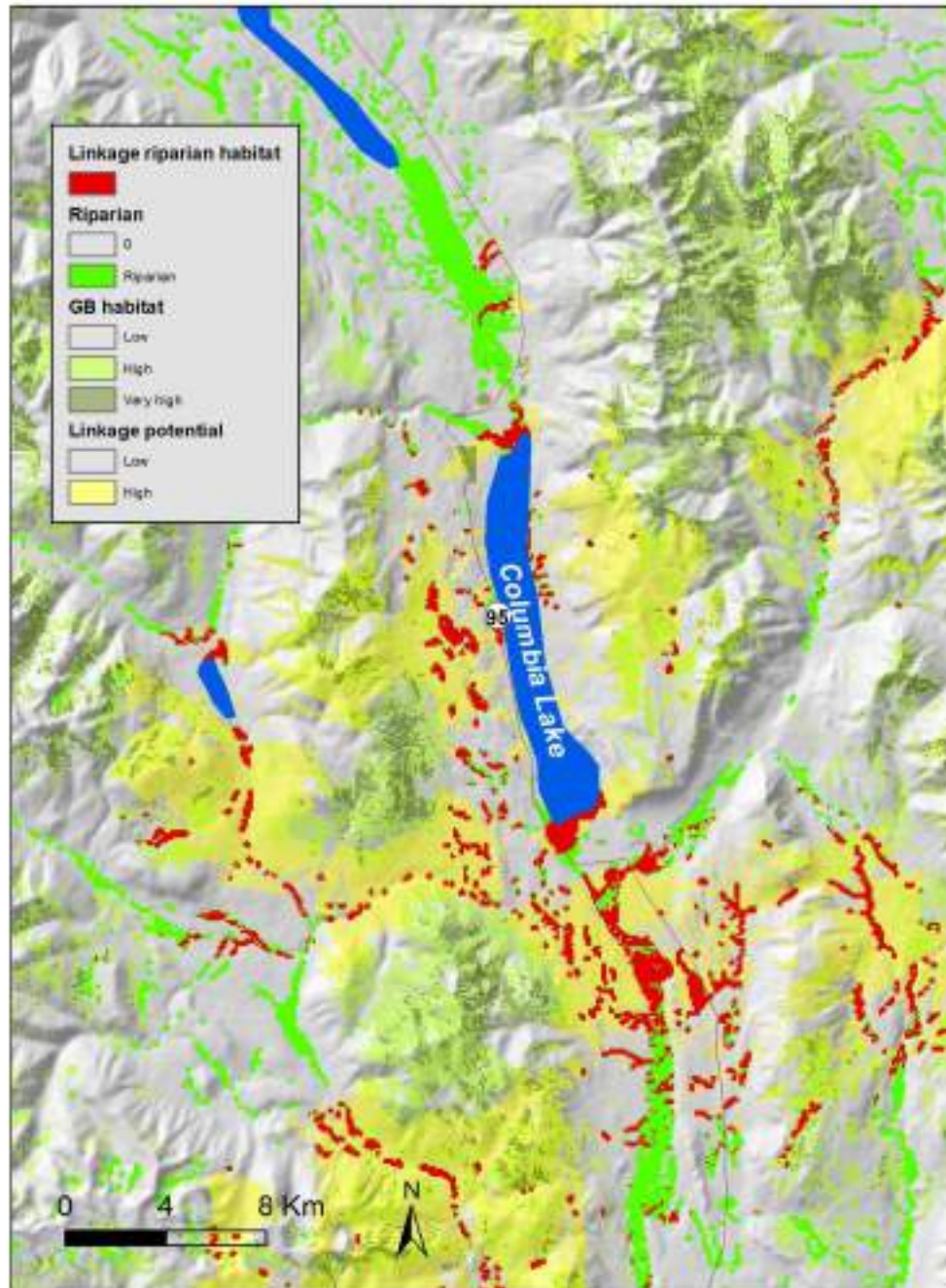
3/1/2015

Contact:
mproctor@kcp.ca

marcy@twtdes.com

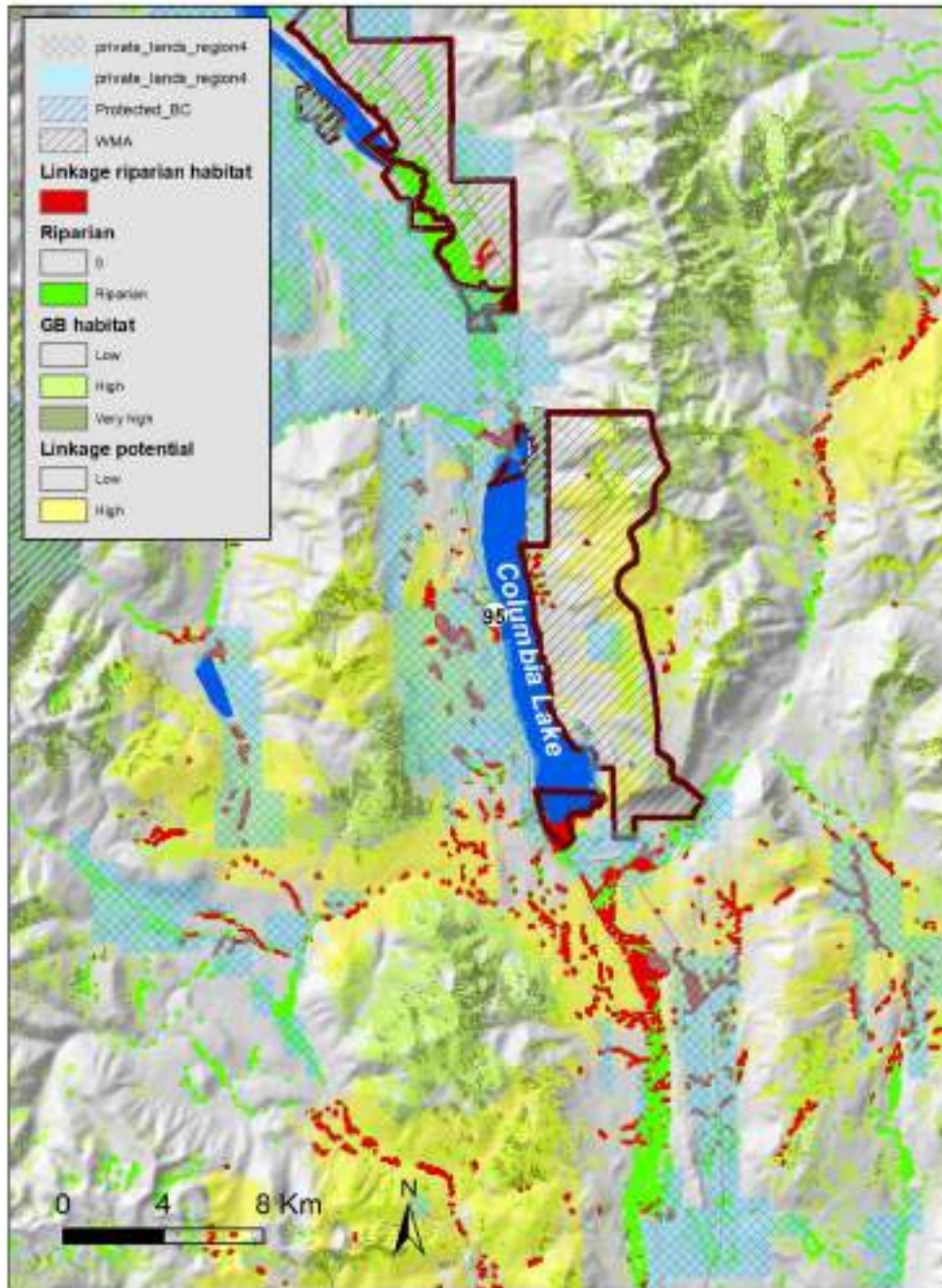
Columbia Lake Wildlife Corridor

North of Radium



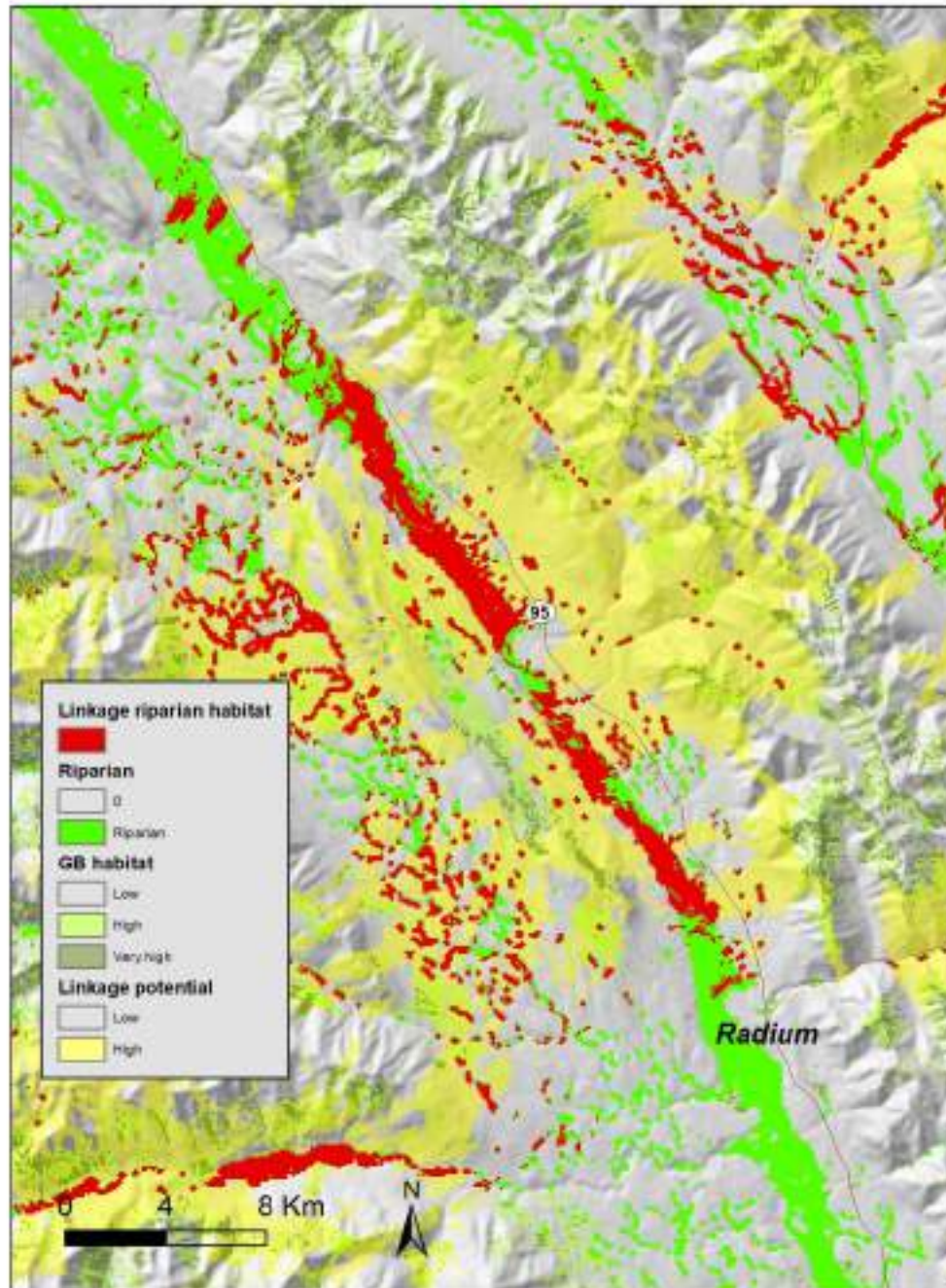
Columbia Lake Wildlife Corridor

North of Radium



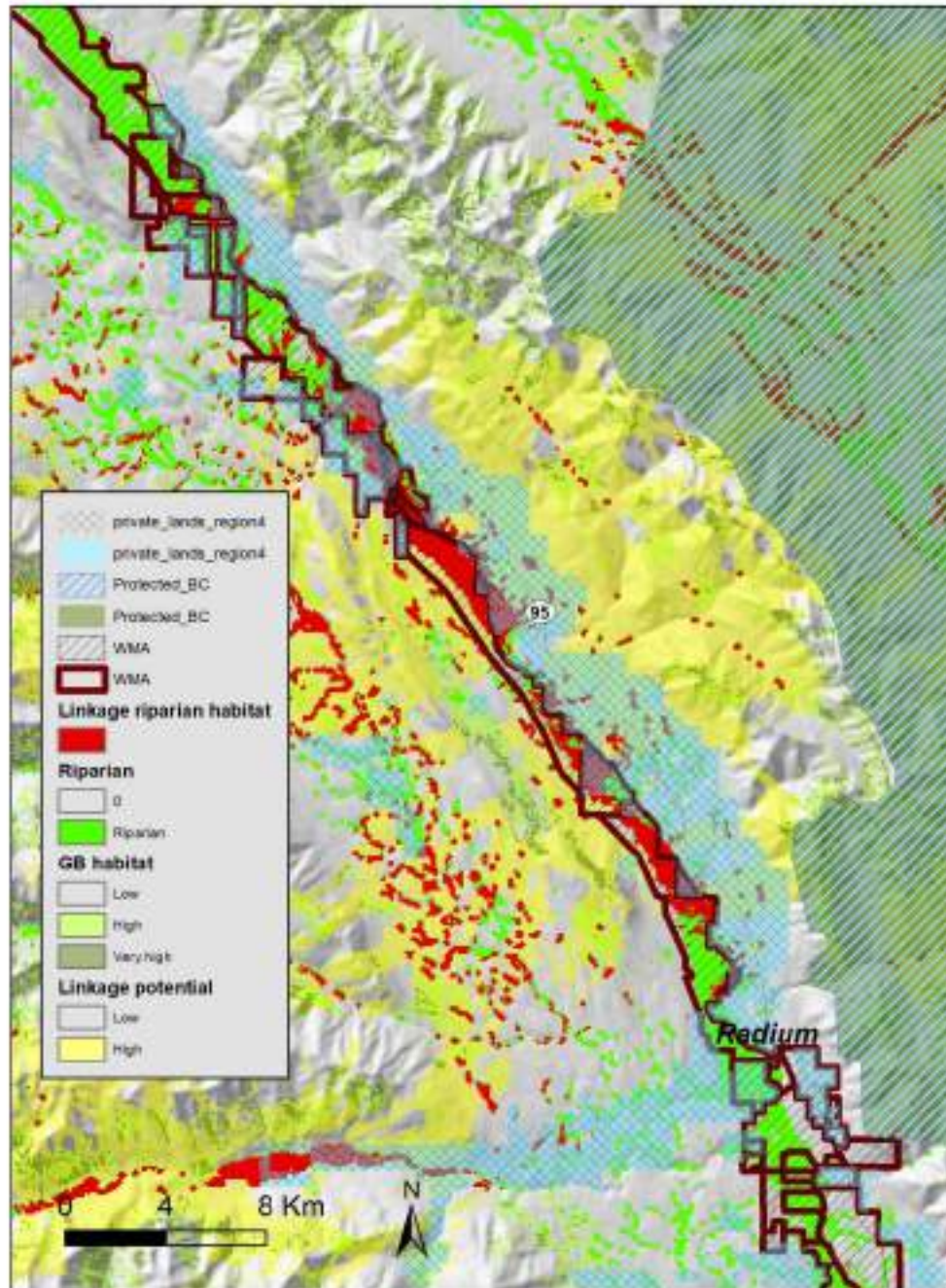
Luxor Wildlife Corridor

North of Radium



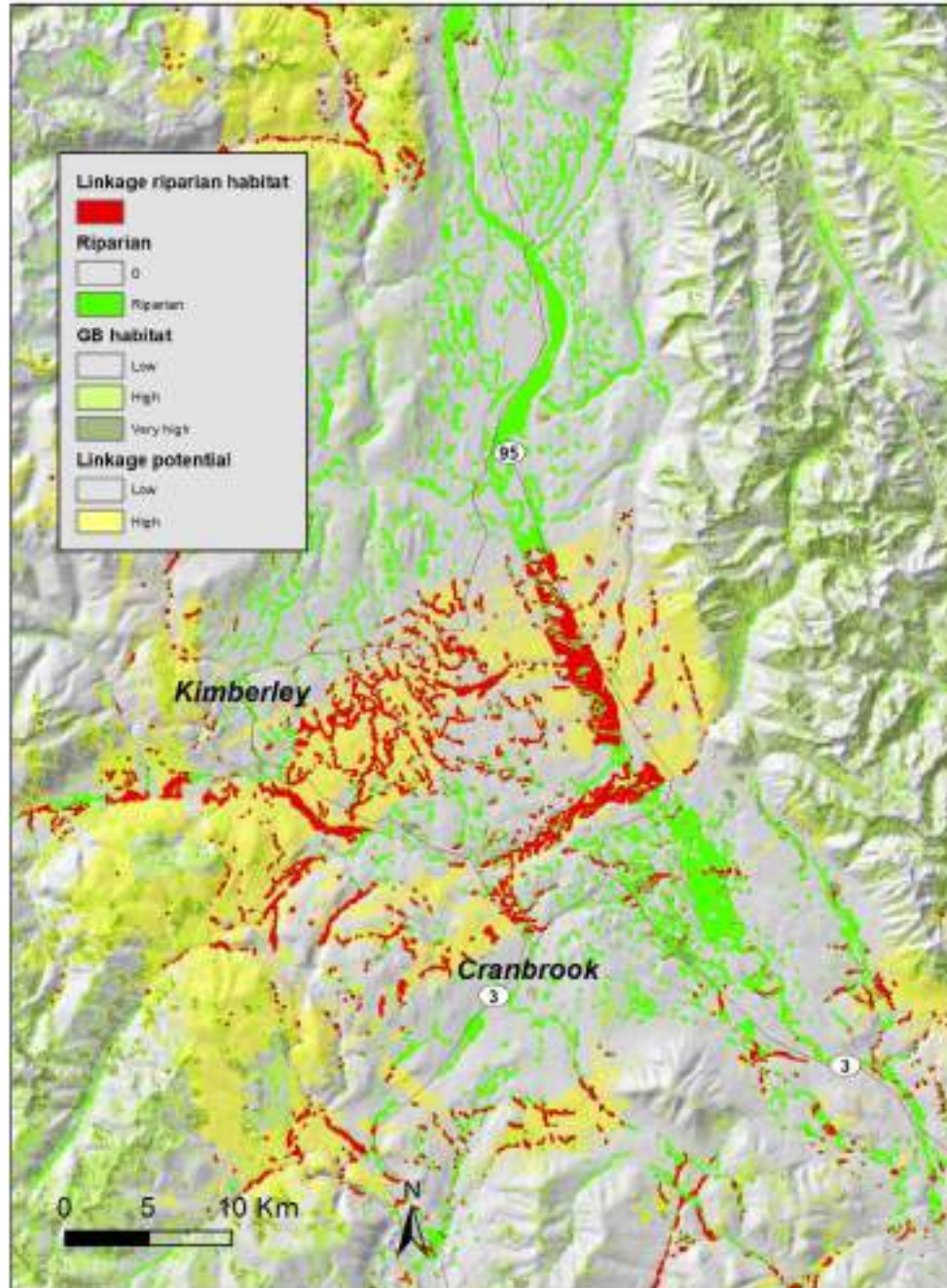
Luxor Wildlife Corridor

North of Radium



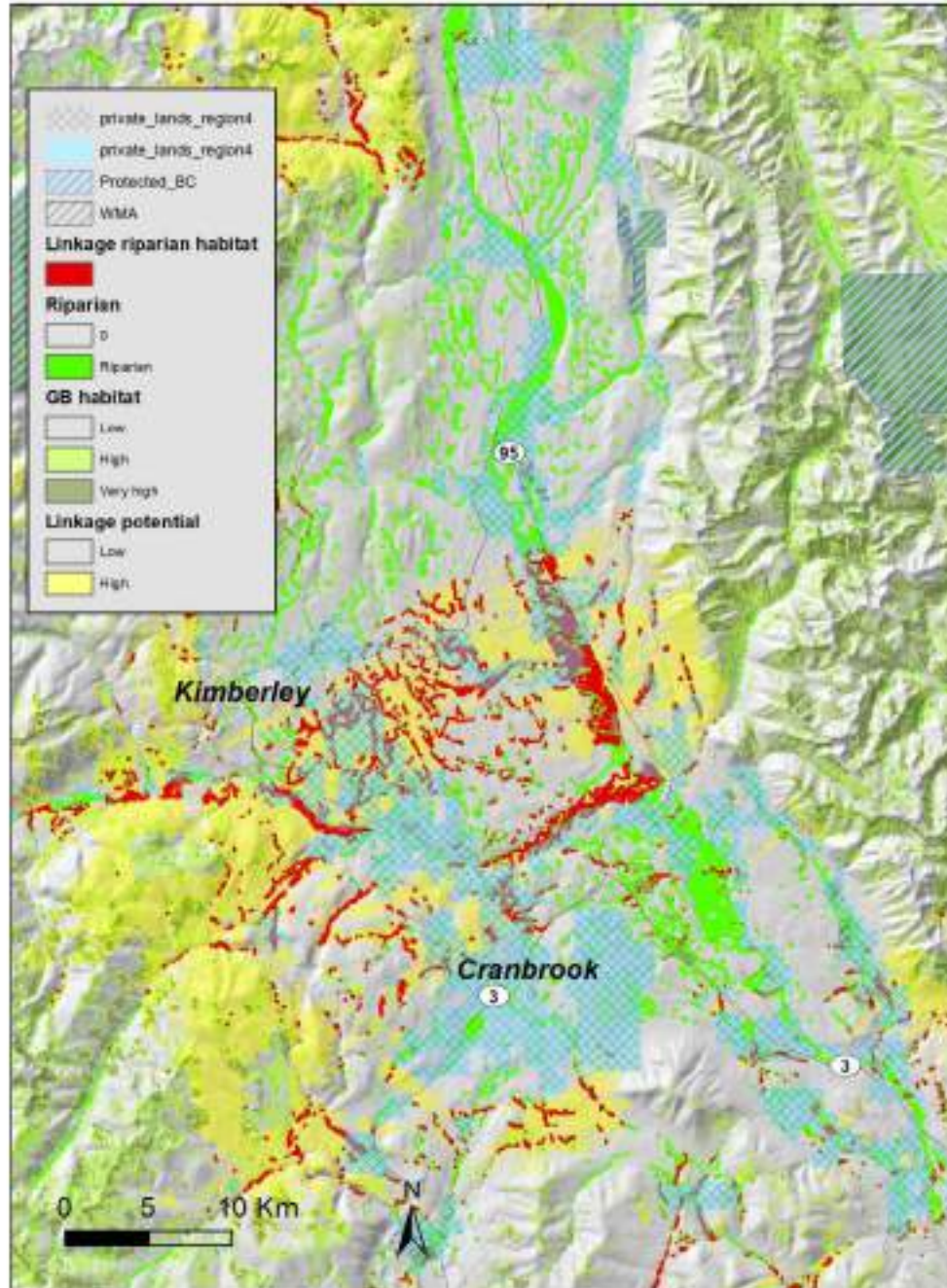
**Kimberley
Wycliffe area**

**North of
Cranbrook**



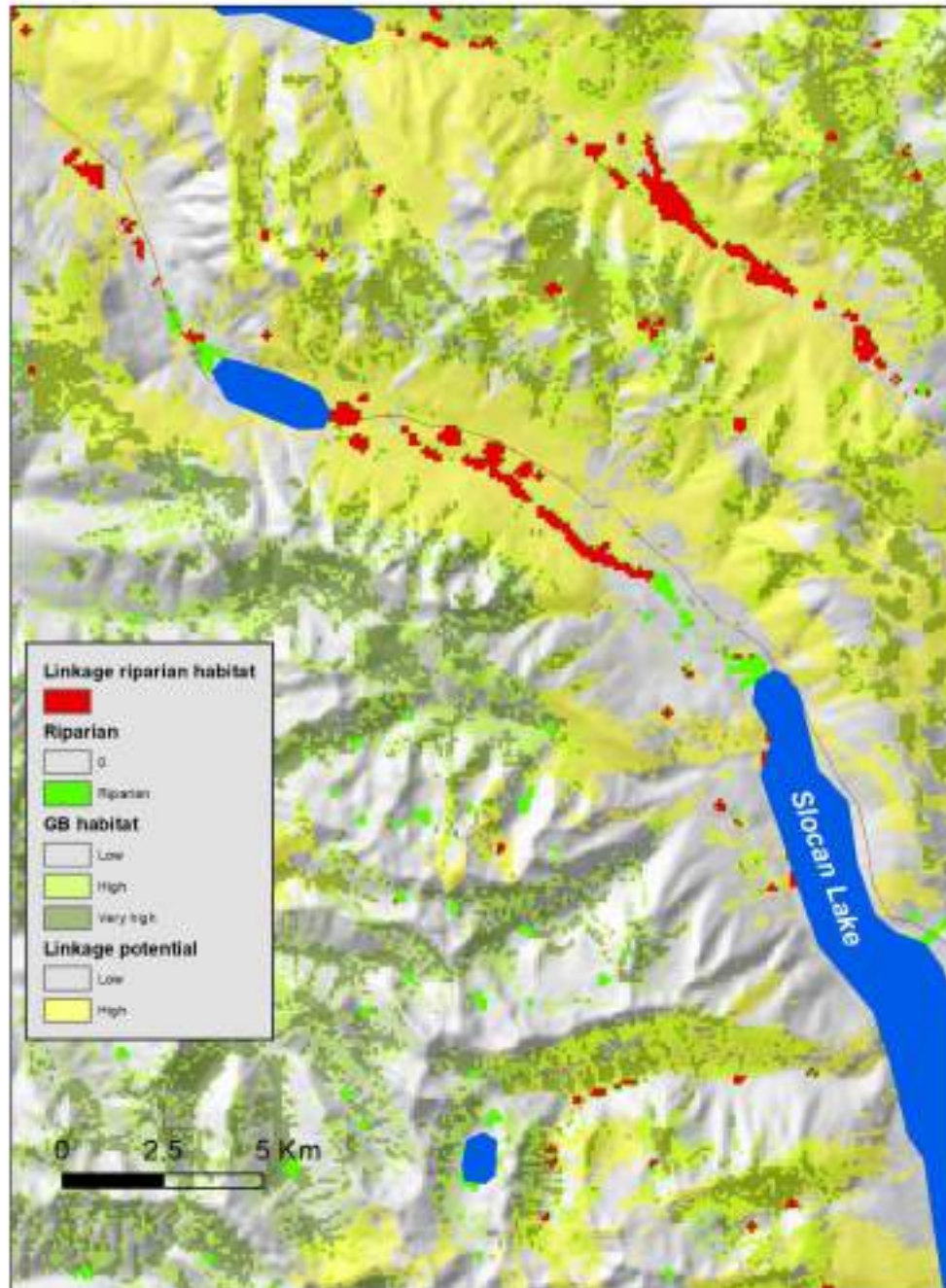
Kimberley Wycliffe area

North of Cranbrook



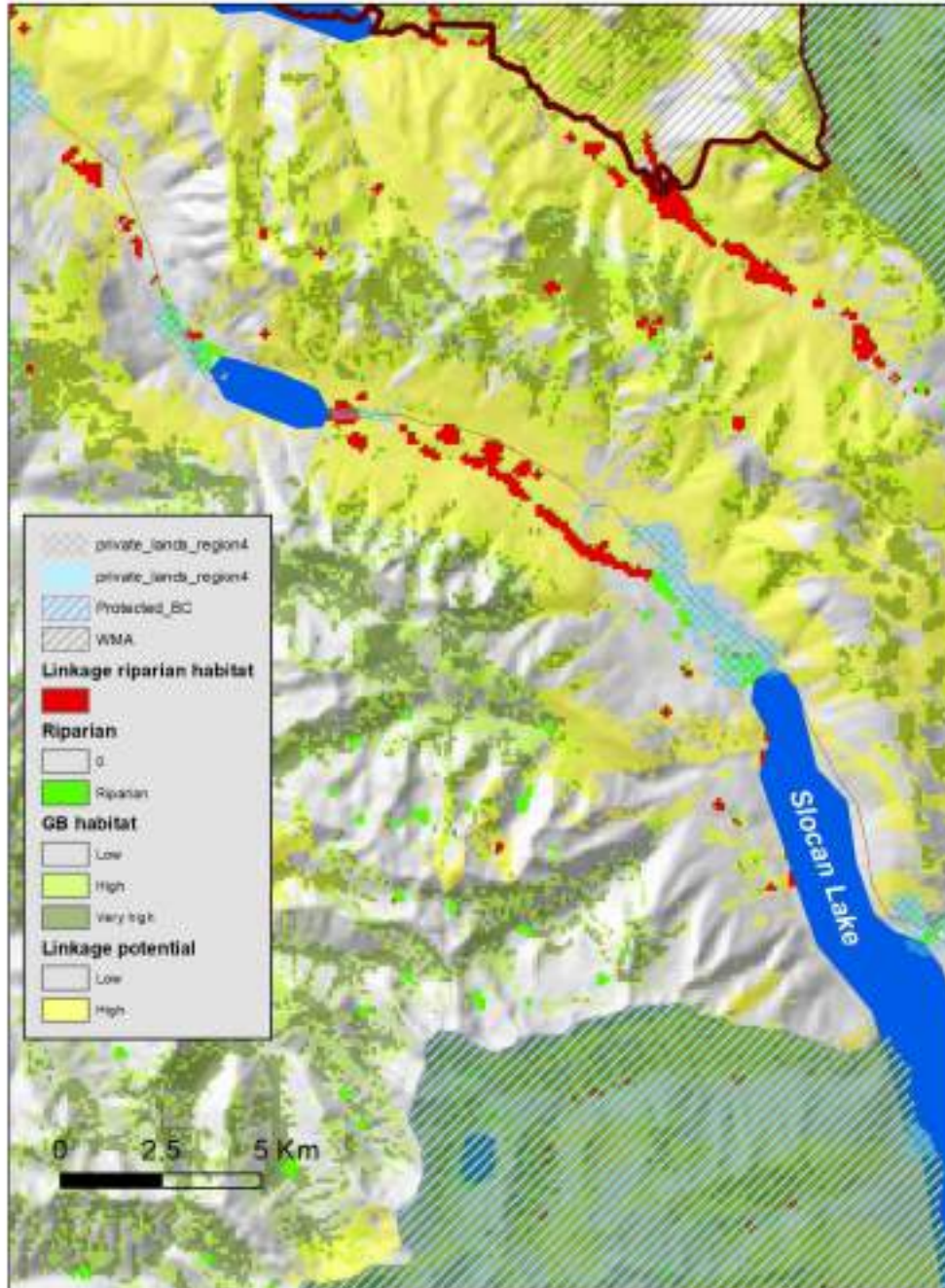
Bonanza Wildlife Corridor

Between Slocan and Summit Lakes



Bonanza Wildlife Corridor

Between Slocan and Summit Lakes





**WILDLIFE
CORRIDOR**

**DRIVE
WITH CARE**

NEXT 93 km

What can local, regional and provincial governments do?

Regional Districts

Integrate into regional planning

Wildlife attractant bylaws

Promote electric fencing programs

Carcass disposal composting facility

Manage garbage disposal, frequent pickups secure transfer stations

Promote coexistence with wildlife

Provide tax incentives to private landowners who restore wetland habitats

Or do other activities that promote connectivity (and reduce their income)

Support the establishment of regional wildlife corridors

How might this look for your agency?

What can local, regional and provincial governments do?

Provincial

Partner with Wildsafe BC

Support electric fencing programs

Consider access mgmt and reduce road development in linkage areas

Don't develop vacant Provincial land in linkage areas

Avoid new recreational developments in corridors

Avoid additional recreation development permits in corridors

Limit and/or reduce livestock grazing permits in corridors

Integrate corridors into Highway planning

Support the establishment of regional wildlife corridors

How might this look for your agency?

Funders

Habitat Conservation Trust Foundation
Fish & Wildlife Compensation Program
National Fish & Wildlife Foundation
Liz Claiborne & Art Ortenberg
Foundation
US Fish & Wildlife Service
Wilburforce Foundation
Great Northern Landscape
Conservation Cooperative
Yellowstone to Yukon Conservation
Initiative
Nature Conservancy of Canada
Parks Canada
Alberta Ingenuity
NSERC
Killam Trust
Tembec Industries
BC Min of Environment
BC Min of Forests
BC Parks
Creston Valley Wildlife Management
Area



Fish & Wildlife
Compensation Program

