

Our Collective Impact

Connected by Conservation, Strengthened by Partnership

Since 2002, **Kootenay Conservation Program (KCP)** has positively influenced land conservation and stewardship across the Kootenays in southeastern BC.

From the beginning, we have supported our partners—a range of non-profit societies, First Nations, government agencies, educational institutions, and agricultural producers—to proactively address conservation challenges and opportunities in the region.

Our collective efforts have impact: land conservation in the Kootenays is stronger, smarter, more effective and lasting because our partners have committed to working together.

Together, we are moving the dial on conservation.

KCP respectfully acknowledges that this work occurs throughout the traditional, ancestral, and unceded territories of the Ktunaxa, Secwépemc, Sinixt, and Syilx Okanagan peoples, whose values and cultures continue to inspire and guide the stewardship of this region.



\$165 million
invested in land conservation



83,000+ hectares
of private land conserved



87
partner organizations



\$3.4 million
generated by
Local Conservation Funds



60+ projects
facilitated



20+
years of success

While our story began in the Kootenays, it now informs and inspires networks across the country—here's why.

Our Partnership Ma



Stronger

By tapping into a shared vision, our partners' work grows stronger.

A whole landscape philosophy.

Our priorities are shaped by an understanding that everything is connected. In the Kootenays—where mountains and valleys create diverse landscapes and large geographic distances between communities—this approach builds a cohesive conservation network.

Local solutions to a global challenge.

A global initiative to protect 30% of the Earth's lands and waters by 2030 relies on coordination from all angles. Our collaborative approach to conservation aims to bring together efforts that ultimately click into the wider global picture.

Smarter

Our initiatives are designed to create and share knowledge and support our partners in accessing the latest science and ways of knowing.

Leveraging best practices.

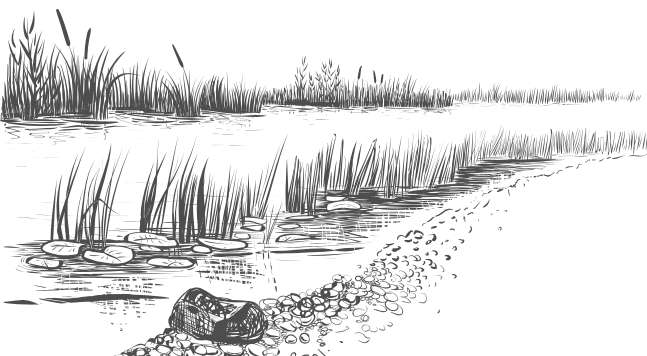
By sharing the latest knowledge, expertise, and technical resources with partners and beyond, land conservation and stewardship across the Kootenays draws from the best available information and practices.

A new way of collaborating.

We conceptualized a new way of thinking about the region. Rather than focusing on jurisdictional boundaries, our conservation neighbourhood approach considers social, ecological and conservation-driven communities. This enables our partners to view collaboration through a local, strategic, place-based lens.

Harnessing diversity for solutions.

We create space for thoughtful problem solving amongst diverse perspectives, and facilitate the development of shared priorities and collective action for conservation.



kes Conservation...



More Effective

Although all our partner organizations have their own goals and priorities, each sees the value of collaboration—with results.

Complex problems, solved together.

Stocked with diverse insights, perspectives, and multiple ways of knowing, our network works together to solve complex conservation challenges.

Conserving landscapes by connecting people.

Landscape connectivity is integral for wildlife movement, reducing habitat fragmentation, and climate adaptation. For decades, land trusts and other partners have worked with us in a coordinated approach to acquire key private lands that help connect landscapes in important ecological corridors.



Lasting

We are in it for the long-term. To ensure nature thrives now and into the future, we work together to care for and enhance the biodiversity and ecological resilience of the Kootenay region.

Honouring long-standing connections.

Our service area is in the traditional, ancestral, and unceded territories of the Ktunaxa, Secwépemc, Sinixt and Syilx Okanagan peoples who have stewarded this land, water and all living things since time immemorial. We seek to support Indigenous-led initiatives and priorities, today and for future generations.

Building financial support.

Many of our partners are non-profit societies with limited capacity and resources. By promoting the establishment of Local Conservation Funds in the region—a local government service created for conservation—we are helping to build financial support for our partners.





Our Activities

Landscape Connectivity

Through the Kootenay Connect Priority Places initiative, we work with local partners to enhance, restore, and manage habitats for species at risk in key ecological corridors.

Knowledge Sharing

Spring tours, fall gatherings, winter webinars and training workshops—we bring people together to have vital conversations about conservation.

Developing Collaborative Priorities

Our Conservation Action Forums bring people together to share knowledge about their local landscape and collectively develop a set of shared action priorities.

Stewardship

Under a collective stewardship framework, we maintain regional stewardship committees and host an online hub for landowners and stewardship practitioners in the Kootenays.

Generating Local Revenue for Conservation

We partner with local governments to deliver Local Conservation Funds—a government service used to support conservation projects reflecting community priorities.

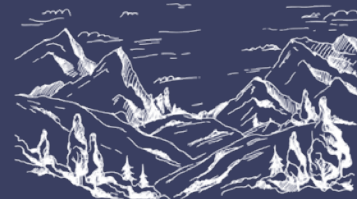
Land Conservation

Our landscape-level approach increases strategic coordination of land acquisition for conservation. We facilitate a Securement Committee and evaluate properties to ensure the most ecologically significant habitat is being conserved into the future.

Become part of our story.

Join us in building stronger, smarter, more effective conservation for generations to come.

To discover how to best support the partnership through knowledge sharing, collaboration, or a financial contribution: connect with us today.



→ kootenayconservation.ca



Kootenay
Conservation
Program
KCP