



Landscape Level
Approach to Biodiversity
and Connectivity


wildsight
Creston Valley



Wildsight Creston Valley Branch

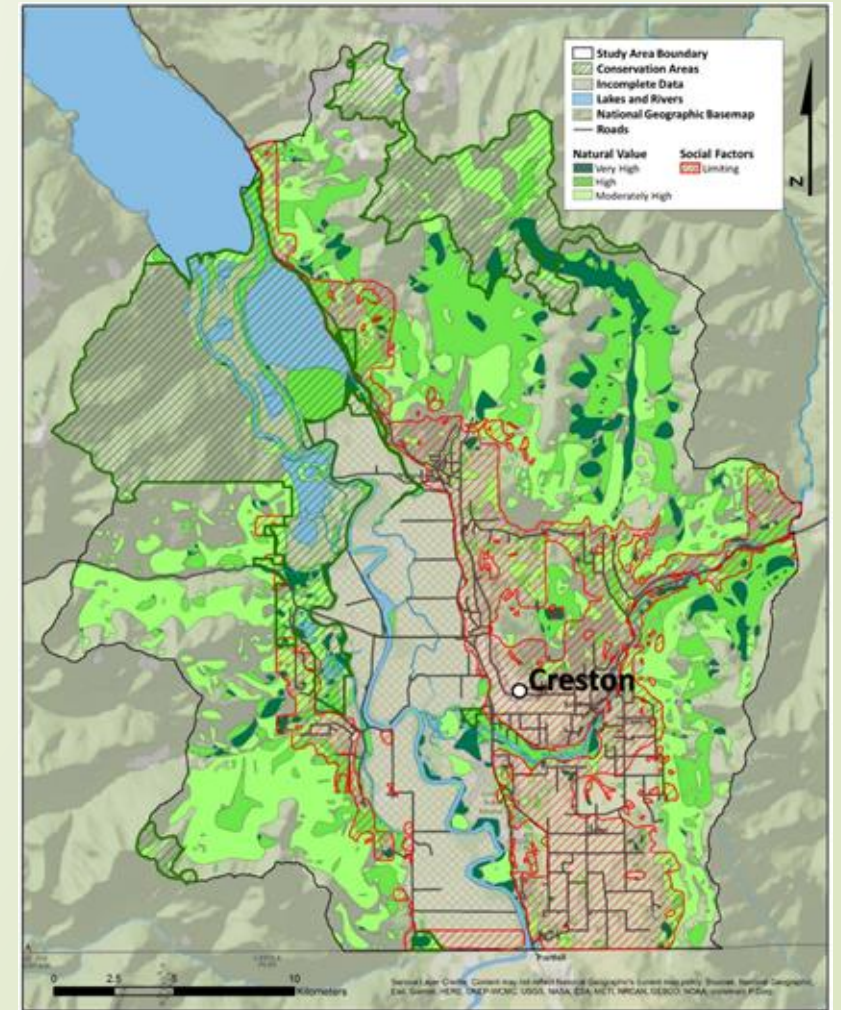
VISION

We restore and maintain healthy ecosystems in the Creston Valley for future generations.



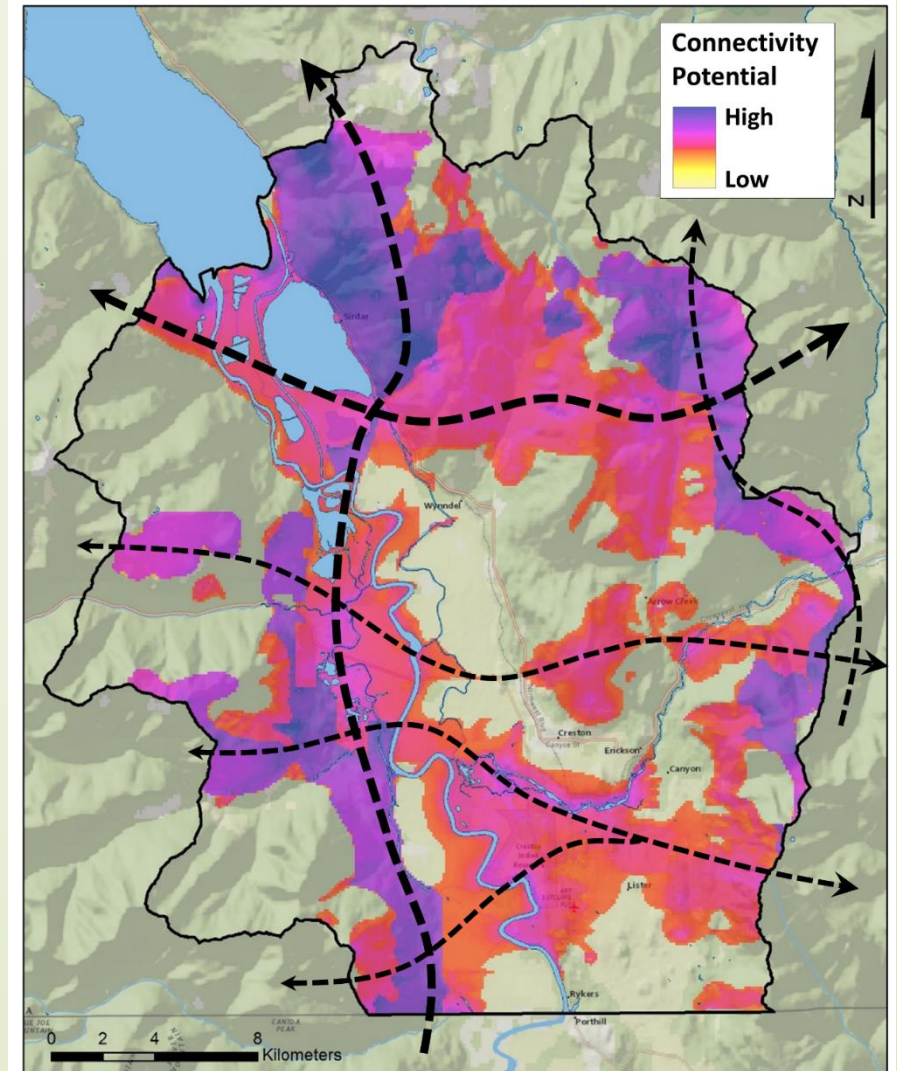
GREEN MAP

- Worked with Selkirk College
- Funded by Y2Y
- 28 digital data layers
- Created a map that highlights key ecological areas
- Tool for land use planning
- Tool for choosing conservation areas



Connectivity Corridors

- Connectivity Model based on “Nodes” and local data
- Yaqan Nu?kyi observations on elk migration
- Michael Proctor data on Grizzly migration

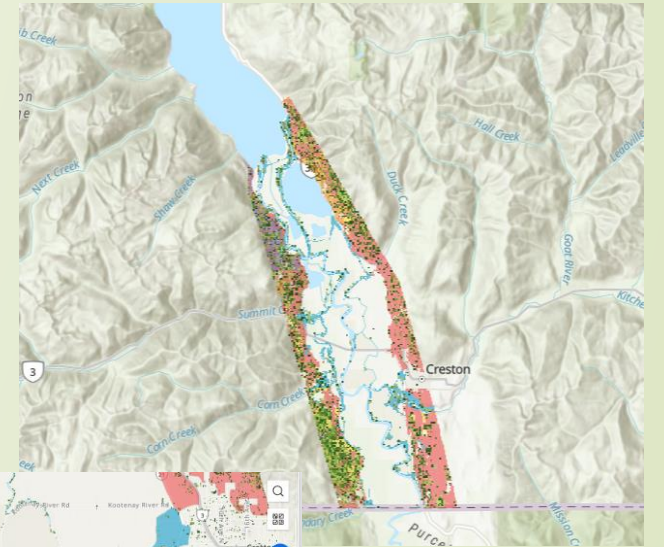


Potential 'Connectivity Corridors' in the Creston Valley

□ Study area boundary

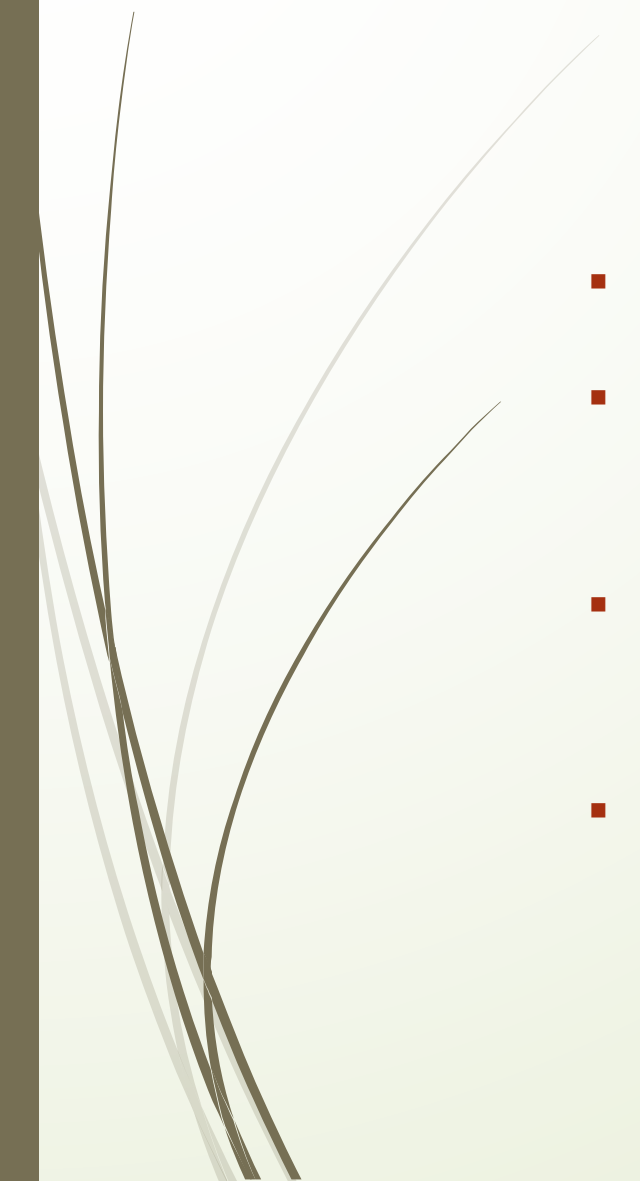
Trees in the Valley Bottom

- Living Lakes provided a GIS Intern
- Few data layers available for the actual valley in 2019
- Using LiDAR map all trees in the valley by species and height
- Mainly Cottonwoods along water courses



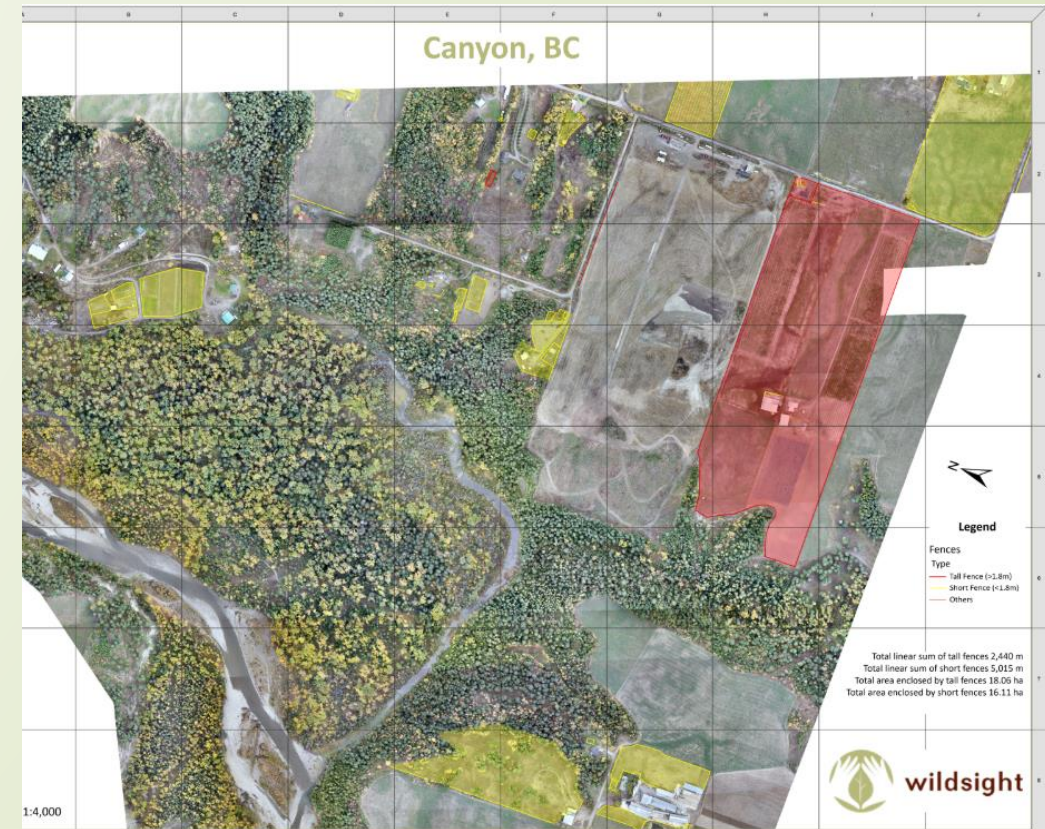


New Project on Connectivity

- Large elk herds in the valley
 - Migrating through the valley to reach wintering grounds
 - Farmers are fencing orchards and other high-value crops with 10' elk exclusion fences
 - Disrupting connectivity through the valley
- 

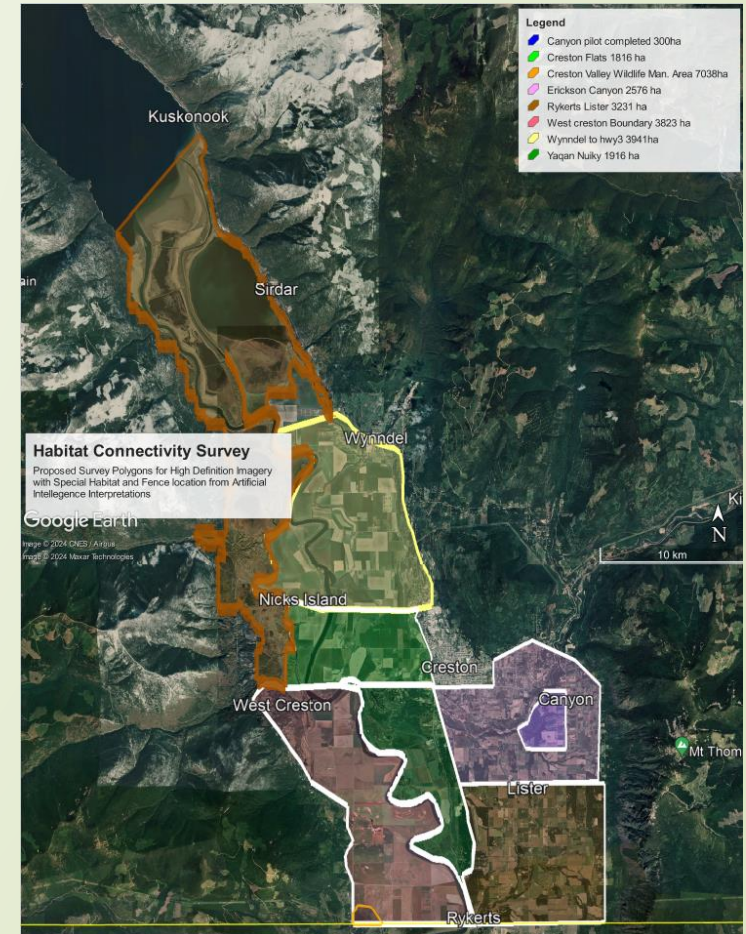
Pilot Study on Elk Exclusion Fences

- 300 ha in Lister
- Drone Photography
- AI-assisted geospatial analysis
- Fences < and > 6m
- Identified 5015m of “short” and 2440m of “tall” fences
- Also mapped cottonwoods but needs more calibration for accurate tree height



Elk Exclusion Fencing Project

- Seeking funding to inventory fences in the whole valley = 24,342 ha
- Work with farmers to establish corridors
- Potential compensation through Agriculture Investment Foundation





Thank you!