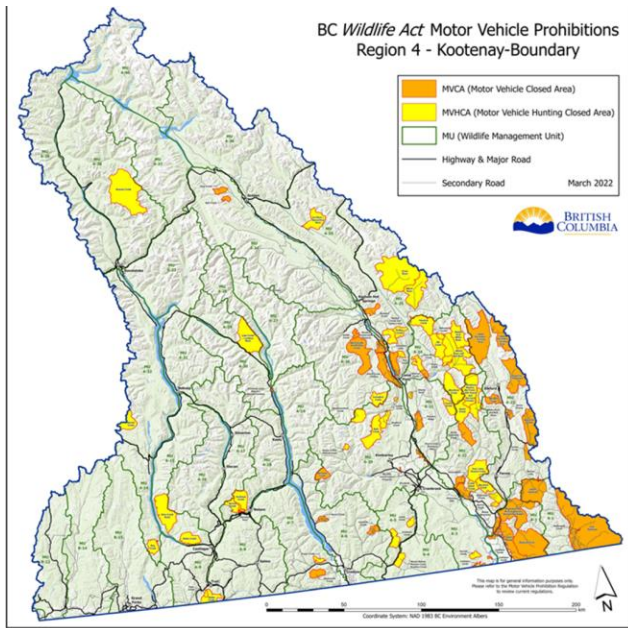


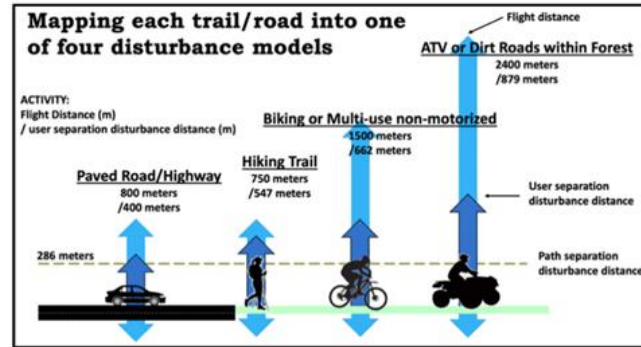


Using Ecological Data for Recreation Planning

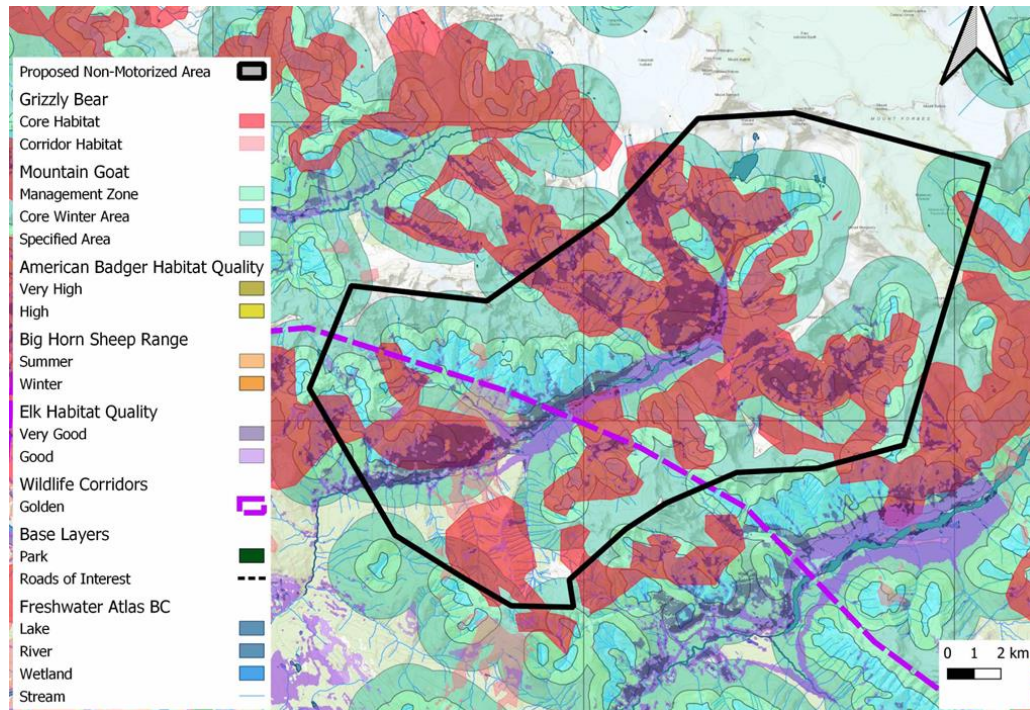
Proposals for Access
Management Restrictions in the
Rocky Mountain Trench



13 Proposed Areas for Access Management



- Determined based on local knowledge
 - Areas with growing recreational pressures in sensitive habitats
- Focal habitats included; Alpine, Cross Valley Corridors (KC), Ungulate Winter Range,
- Flee distances for elk
- Road densities for elk and grizzly bears
- Habitat models for grizzly, elk, badger, bighorn sheep.



Summary of Data Used

Name	Road length (km)	Road density (km/km ²)	% of area that are important habitats for focal species *	% of area that are alpine habitat	% of area that are identified wildlife corridors**	% of area that is Ungulate winter range***
Waitabit	0.0	0.000	90.5	21.8	28.5	85.6
Glenogle Ridge	115.7	0.415	97.8	12.6	82.3	93.7
Holt to Hospital	71.0	1.808	97.3	0.4	99.9	49.7
Hobo to Glacier	144.7	0.393	75.5	11.5	5.6	41.4
Bugaboo - Templeton	114.9	0.432	98.8	17.7	100.0	89.0
Red Rock Connector	43.3	2.705	99.9	0.0	70.0	91.0
Steamboat - Dunbar	165.9	3.701	100.0	0.0	76.3	57.6
Steamboat - Radium	22.4	2.826	99.9	0.0	100.0	98.9
Forster Watershed	52.2	0.378	93.1	26.4	10.5	81.3
Horsethief Watershed	63.4	0.190	90.1	41.5	45.8	82.1
Delphine Watershed	22.6	0.360	97.8	38.1	0.0	97.4
Goldie	4.5	0.090	94.7	2.9	0.0	79.1
Rushmere	17.1	4.075	100.0	0.0	90.1	96.9

*Focal species: Elk, grizzly bear, mountain goat, bighorn sheep, badger

**KC/KCP multi-species corridor mapping.

***as designated by provincial GAR orders or KBHLUP where no GAR order exists

Survey for Support – CWSP Partner – Golden District Rod and Gun Club

Question	Yes	No	Maybe
Do you support access management to conserve important wildlife habitats? (n=87)	57.5%	24.1%	18.4%
Do you think motorized activities should be restricted in alpine habitats? (n=86)	55.8%	36%	8.1%
Do areas with recent wildfires need to have access management restrictions? (n=87)	26.4%	43.7%	29.9%
Do seasonal migration corridors for species like mule deer and elk need motorized restrictions? (n=87)	36.8%	44.8%	18.4%
Do valleys with new roads need access restrictions? (n=87)	41.4%	44.8%	13.8%
Should habitat modeling for elk, grizzly bears, mountain goats, badgers and bighorn sheep be used to determine access management areas in the region? (n=87)	50.6%	32.2%	17.2%