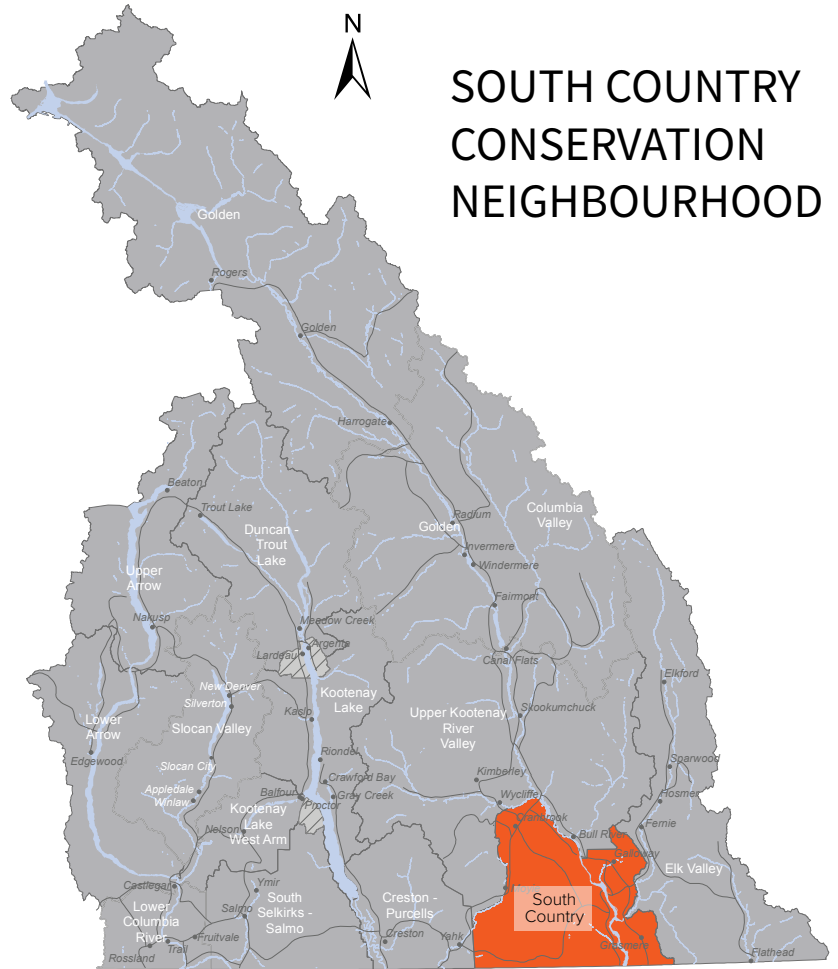


# SOUTH COUNTRY STEWARDSHIP SOLUTIONS

## FOR LANDOWNERS & LAND MANAGERS

- Do you need help with wildlife issues or invasive plants?
- Would you like to enhance wildlife habitat on your property?
- Are you interested in funding opportunities to help you?
- Would you like to be involved in monitoring programs?
- Do you want to protect the natural environment on your property?



If you've answered yes to any of these questions then this is the guide for you!

*Inside*

# FIND LOCAL SERVICES TO HELP WITH CONSERVATION ON YOUR PROPERTY.



**VISIT** [KOOTENAYCONSERVATION.CA/TOOLKIT](http://KOOTENAYCONSERVATION.CA/TOOLKIT)

Together We're Taking Care of Our Natural Landscapes and our Kootenay Way of Life



## FARM RESOURCES

ACCESS INFORMATION AND RESOURCES TO STEWARD YOUR FARM



## KOOTENAY BOUNDARY FARM ADVISORS

1-800-958-7174  
coordinator@kbfa.ca  
www.kbfa.ca



## FARM PLANS

DEVELOP AN ENVIRONMENTAL FARM PLAN FOR NO COST



## ENVIRONMENTAL FARM PLAN PROGRAM

1-866-522-3447 • info@bcac.ca  
www.ardcorp.ca/programs/environmental-farm-plan/



## FARM INCENTIVES

RECEIVE INCENTIVES TO CONSERVE AND RESTORE RIPARIAN SITES ON YOUR FARM



## FARMLAND ADVANTAGE

info@farmlandadvantage.com  
www.farmlandadvantage.ca



## WILDFIRES

REDUCE THE RISK OF WILDFIRE ON YOUR PROPERTY AND SUPPORT HEALTHY LANDSCAPES



## REGIONAL DISTRICT OF CENTRAL KOOTENAY

250-352-1539  
firesmart@rdck.bc.ca



## LAND DONATION

DONATE ECOLOGICALLY SIGNIFICANT LAND TO A LAND TRUST



## KOOTENAY CONSERVATION PROGRAM

On behalf of participating Land Trusts.  
manager@kootenayconservation.ca  
www.kootenayconservation.ca/securement-coordination/



## TAX INCENTIVES

RECEIVE TAX BENEFITS BY DONATING LAND TO A QUALIFIED RECIPIENT



## ECOLOGICAL GIFTS PROGRAM

1-800-267-2384  
www.canada.ca/en/environment-climate-change/services/environmental-funding/ecological-gifts-program.html



## AQUATIC INVASIVES

LEARN TO PROTECT WATERS BY PREVENTING THE SPREAD OF AQUATIC INVASIVE SPECIES



## EAST KOOTENAY INVASIVE SPECIES COUNCIL

250-919-7826  
info@ekisc.com  
www.ekisc.com



## TERRESTRIAL INVASIVES

RECEIVE INFORMATION AND RESOURCES TO PREVENT AND CONTROL INVASIVE PLANTS



## EAST KOOTENAY INVASIVE SPECIES COUNCIL

250-919-7826  
info@ekisc.com  
www.ekisc.com



PHOTO CREDITS: RACHEL ROUSSIN (FARM RESOURCES), BRUCE BLACKWELL (WILDFIRES)



WILDLIFE



HABITAT



MONITORING



FARMS & RANCHES



FUNDING



## INVASIVE PLANTS

RECEIVE GUIDANCE AND SUPPORT TO MANAGE INVASIVES ON YOUR PROPERTY



## NEIGHBOURHOOD INVASIVE PLANT PROGRAM

250-489-2791 • nipp@rdek.bc.ca  
www.rdek.bc.ca/departments/environmentalservices/invasive\_plant\_control/



## WETLAND EDUCATION

ACCESS TOOLS AND RESOURCES FOR BUILDING A WETLAND ON YOUR PROPERTY



## WETLANDS EDUCATION PROGRAM

1-888-881-2293  
wep@bcwf.bc.ca  
www.bcwf.bc.ca/wetlands-program/



## GROUNDWATER

LEARN TO MONITOR YOUR WELL FOR THE GROUNDWATER MONITORING PROGRAM



## LIVING LAKES CANADA

1-778-802-8392  
groundwater@livinglakescanada.ca  
www.livinglakescanada.ca/project/columbia-basin-groundwater-monitoring-program/



## WOLVERINE SIGHTINGS

REPORT SIGHTINGS OF WOLVERINES AND THEIR SIGNS



## WOLVERINE WATCH

info@wolverinewatch.org  
www.wolverinewatch.org/report-observations



## HERON SIGHTINGS

REPORT HERON NESTS AND SIGHTINGS IN THE COLUMBIA BASIN



## PANDION ECOLOGICAL RESEARCH LTD.

250-505-9978  
mmachmer@netidea.com  
www.fwcp.ca/wanted-heron-sightings



## SWALLOW SIGHTINGS

REPORT BREEDING COLONIES OF BANK SWALLOWS IN YOUR AREA

## KOOTENAY BANK SWALLOW SURVEY

kootenaybankswallows@gmail.com



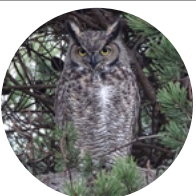
## NIGHTJAR SURVEY

JOIN THE CANADIAN NIGHTJAR SURVEY TO MONITOR NIGHTJAR POPULATIONS



## BIRDS CANADA

1-877-349-2473  
acoughlan@birdscanada.org  
www.birdscanada.org/birdmon/nightjars/main.jsp



## MONITOR OWLS

JOIN THE NOCTURNAL OWL SURVEY TO HELP MONITOR TRENDS IN OWL POPULATIONS



## BIRD CANADA

1-877-349-2473  
bcvolunteer@birdscanada.org  
www.birdscanada.org/bird-science/nocturnal-owl-survey/



WILDLIFE



HABITAT



MONITORING



FARMS & RANCHES



FUNDING



## BAT ROOSTS

LEARN TO LIVE SAFELY WITH BATS OR EVICT THEM PROPERLY



## KOOTENAY COMMUNITY BAT PROJECT

1-855-922-2287 Ext. 14  
kootenay@bcbats.ca  
www.bcbats.ca/regions/kootenays/



## SHEEP SEPARATION

HELP STOP THE SPREAD OF DISEASE TO WILD SHEEP

## BC SHEEP SEPARATION PROGRAM

250-804-3513 • jeremy.ayotte@gmail.com  
www2.gov.bc.ca/gov/content/industry/agriculture-seafood/animals-and-crops/animal-production/sheep-and-goats/mycoplasma-ovipneumoniae

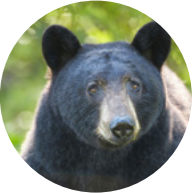


## GRIZZLIES

COEXIST WITH GRIZZLY BEARS TO IMPROVE HUMAN AND WILDLIFE SAFETY

## GRIZZLY BEAR COEXISTENCE SOLUTIONS

250-353-1137  
grizzlybearsolutions@gmail.com



## WILDLIFE

FIND OUT ABOUT WAYS TO PREVENT HUMAN-WILDLIFE CONFLICT



## WILDSAFE BC

250-828-2551 ext. 110  
bc@wildsafe.com  
www.wildsafebc.com



PHOTO CREDITS: LYLE BEAUDOIN (SHEEP), GILLIAN SANDERS (GRIZZLIES)

This guide and our online Stewardship Solutions Toolkit available at:

**KOOTENAYCONSERVATION.CA/TOOLKIT**

will help you learn more about the local conservation resources available to landowners and land managers in your region.

With special thanks to our sponsors:

