



## West Kootenay Stewardship Committee Meeting Agenda

Tuesday, May 2, 2017, 9:30am – 12:00pm PDT  
Lardeau Valley Community Centre, 13429 Hwy 31, Meadow Creek

The meeting objectives are to 1) Share updates on local stewardship activities of each organization; and 2) Provide input on the KCP Stewardship Program's current activities as well as long-term strategic direction.

---

9:15 - 9:30 am

- Coffee, tea and goodies provided

---

9:30 - 10:15 am

Welcome and roundtable of introductions

- Updates on activities from Stewardship Groups

---

10:15 – 11:15 am

KCP updates

Landowner Outreach Training proposal

- What do you think about this idea?
- What topics would you like to have covered?
- Would you attend a 2-day workshop this fall?
- Are there services you could offer?

Conservation Action Planning – Conservation Neighbourhoods

- Are there other regions in the Kootenays that would benefit from a collaborative, strategic, ecosystem-based approach to conservation and restoration?

---

11:15 am - 11:45 pm

KCP's Stewardship Strategic Goals

Do these goals:

- Capture your thoughts on important stewardship priorities?
- Accurately and clearly articulate KCP's role in stewardship?
- Clearly describe how KCP goes about doing stewardship?

---

11:45 am - 12:00 pm

Roundtable Input

- Professional Development workshops you would like to see offered
- Webinars topics of interest to you
- Closing thoughts and Adjournment

---

12:00 – 12:45 pm

- LUNCH



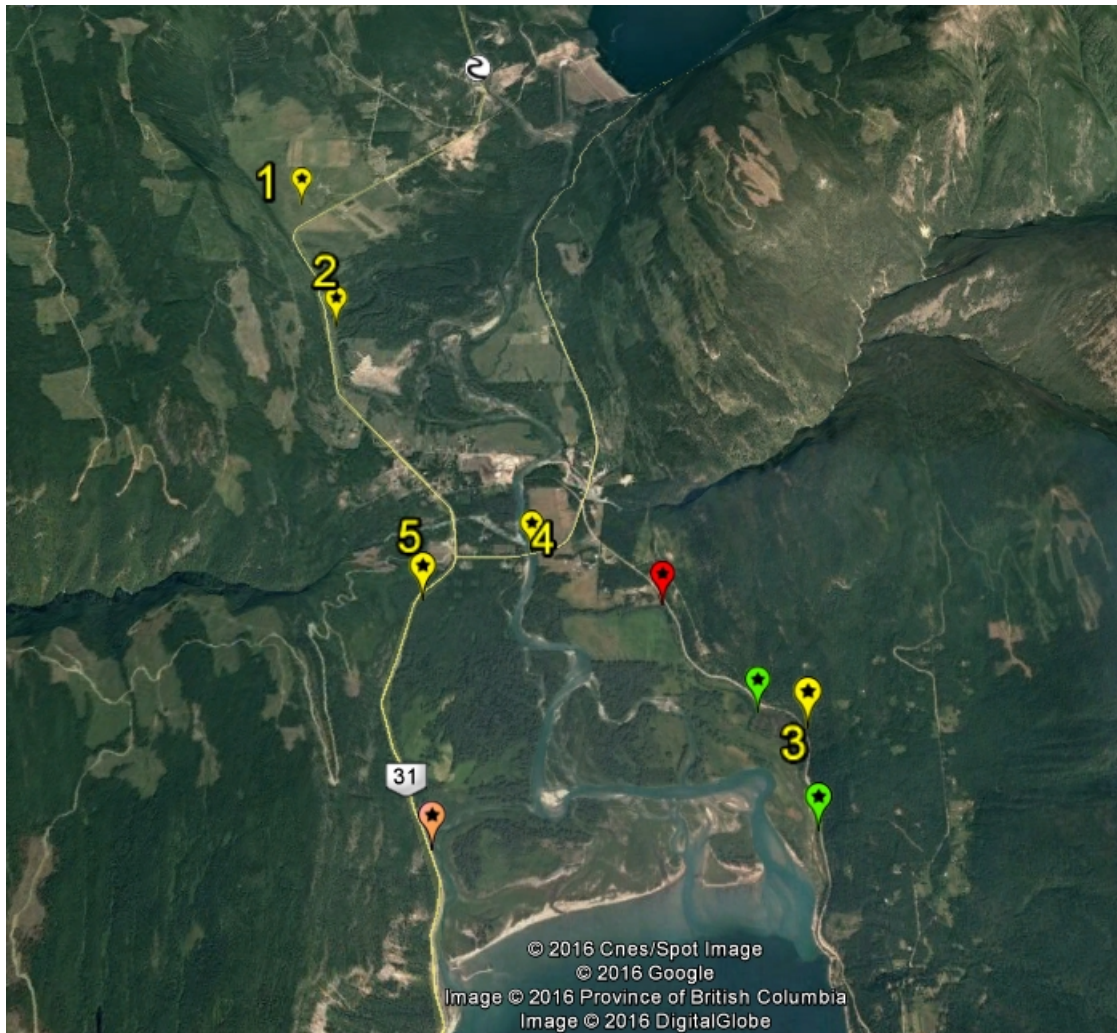
## West Kootenay Spring Field Tour

Tuesday, May 2, 2017, 12:30 – 5:00pm PDT

Lardeau Valley Community Centre, 13429 Hwy 31, Meadow Creek

### **12:30 Meet at Lardeau Valley Community Centre, Meadow Creek**

- 12:30-12:35 Overview of the Field Tour - Marcy
- 12:35-12:50 Duncan Lardeau Area Conservation Lands – Rob Neil, The Nature Trust of BC  
Grizzly Bears in a Landscape Context – Gillian Sanders, Grizzly Bear Coexistence Solutions
- 12:50 Clean up from lunch, load into vehicles & travel to the Halleran property.
- 1:10-2:10 **STOP 1: Halleran Wetlands**
- Wetlands restoration project:* Neil Fletcher, BC Wildlife Federation; Irene Manley, Ministry of Forests, Lands and Natural Resource Operations - Fish and Wildlife Compensation Program Section; Terry Halleran, Landowner
- Grizzly bears – Valley-wide corridors and Kokanee spawning channel:* Gillian Sanders, Grizzly Bear Coexistence Solutions
- 2:25-2:40 **STOP 2: Meadow Creek South Conservation Property** – Quick overlook from highway
- Ecological values and habitat features:* Rob Neil, The Nature Trust of BC
- 3:00-4:00 **STOP 3: Painted Turtles, Bats & Bears**
- Turtle ecology and restoration of nesting area:* Brenda Herbison, Local Biologist & Landowner; Irene Manley, MFLNRO - Fish and Wildlife Compensation Program Section
- Bat ecology:* Heather Gates, Kootenay Community Bat Project
- Humans and grizzly bears:* Gillian Sanders, Grizzly Bear Coexistence Solutions
- 4:10-4:20 **STOP 4: Hydrologic Processes and Cottonwoods** – Quick overlook from bridge
- River channels and cottonwood regeneration:* Brenda Herbison, Local Biologist & Landowner
- 4:30-5:00 **STOP 5: Lot 570 Walk - Cottonwood-Cedar Forest on Conservation Lands**
- Riparian enhancement:* Rob Neil, The Nature Trust of BC
- History and ecological values:* Brenda Herbison, Local Biologist & Landowner



## Drive-by Sites

There are many interesting places to visit in the Meadow Creek-Duncan area. Since we can't go everywhere, there are three additional places of interest noted on the map above and designated as "drive-by" sites. Descriptions provided below are intended to be shared by passengers on the field tour.

**Sites green:** En route to and south of Stop 3 are Argenta slough wetlands that have great blue heron (year-round), breeding western toads and tree frogs. These sloughs are threatened by private land uses (including horse grazing), as well as by lack of management authority over Crown land, reed canary grass and river behaviour.

**Site red:** Look west across wetlands and fields of TNT's Lake Ranch Conservation Property.

**Site pink:** South end overlook of large island Lot 16024 which is one of the Crown lots contributing to the Conservation Properties at the head of the lake. There have been numerous habitat enhancement activities on Lot 16024 over the years, some visible from the highway. Note new reed canary grass invasion along the channel.