



KCP Local Government Forum:
Tools for Conservation
March 2019

Local Conservation Fund: Successes and Opportunities

Juliet Craig
Program Manager,
Kootenay Conservation
Program

Photo: Dr. James Thorsell



Introduction



- What is Local Conservation Fund?
- How to implement and LCF
- Current market research results

Photo: Nature Conservancy
of Canada



What is Local Conservation Fund?



Photo: Lyle



Needs for Private Land Conservation



Photo: Richard Klafki



KCP Role



Photo: Pat Morrow




Columbia Valley Local Conservation Fund

CLEAN WATER
WILDLIFE
OPEN SPACE

LOCAL
CONSERVATION
FUND

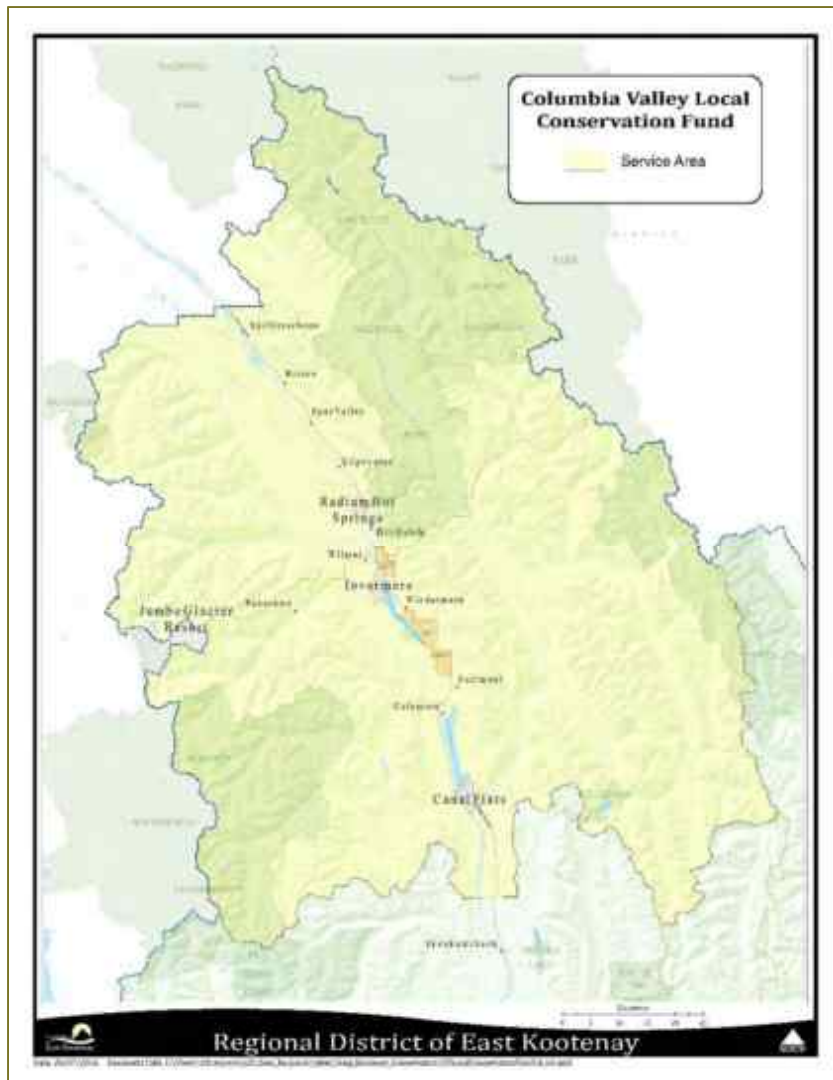
On November 15th 2008
VOTE YES
to the
**LOCAL
CONSERVATION
FUND**

 **YES**





Columbia Valley Local Conservation Fund



- Columbia Valley (RDEK)
 - Electoral Areas F & G
 - Invermere, Radium Hot Springs, Canal Flats
 - \$20/parcel/year
 - ~ \$230,000 available for allocation





Innovative Leadership

“demonstrate **innovation, leadership and collaboration** in sustainable land use in BC”

Real Estate Foundation of BC





Kootenay Lake Local Conservation Fund



November 15, 2014





Kootenay Lake Local Conservation Fund



- Kootenay Lake (RDCK)
 - Electoral Areas A, D & E
 - \$15/parcel/year
 - ~ \$100,000 available for allocation





KLLCF Guidance Document

Regional District of Central Kootenay

Kootenay Lake Local Conservation Fund Guidance Document



Submitted To:

Regional District of Central Kootenay
Box 590, 202 Lakeside Drive
Nelson, BC V1L 5R4

Submitted by:

Amec Foster Wheeler Environment & Infrastructure – Nelson, BC
Pandion Ecological Research Ltd – Nelson, BC

FINAL – 15 May 2018

- Priority conservation actions
- Ranking matrix for Technical Review Committee
- Potential locations for conservation projects



South Okanagan Conservation Fund





Local Conservation Fund Themes

- Protection of our quality of life
- Conservation & restoration of fish and wildlife habitat
- Conservation of watersheds
- Conservation of open space & farm land
- **Based on Local Values and Priorities!**





LCF Accomplishments



Photo: Larry Halverson

➤ >100 projects

- Restoration (grassland, creek and wetland)
- Invasive plant management
- Species at risk management
- Wildlife conflict reduction
- Water monitoring
- Climate Conservation Action
- Incentives for Landowners



LCF Accomplishments



Photo: NCC

➤ Securement

- > 13,000 ha
- Lot 48 & Windermere West (SRL K2) – covenant
- Marion Creek Benchlands
- Next Creek



Community Benefits



➤ Citizen-science water quality monitoring

- Community engagement
- Early detection of issues to ensure watershed and drinking water health

Photo: Lindsay Proctor



Community Benefits



- Fewer invasive plants
- Farmland stewards
 - Healthier grassland, rangeland, agricultural productivity
 - Less cost for weed control to private landowners



Community Benefits



➤ Protected bat colonies

- Service to residents with “nuisance” bat issues
- Mosquito control
- Healthier forest and agricultural industries and less cost of pest control



Community Benefits

➤ Stewards of habitats and species at risk

- Habitat Restoration
- Species at Risk recovery





Community Benefits



- Restoration reduces fire hazard



Community Benefits



➤ Stewards of habitats

- Functioning riparian ecosystems
- Trails and signs highlighting natural areas



Photo: Pat Morrow (top); KCP (right)



Local Government Benefits

*“Protect the **wildlife and habitat values** surrounding the plan area by supporting conservation efforts in important natural areas and wildlife corridors”* - Steamboat Jubilee OCP

*“Support the **protection, rehabilitation and enhancement** of wetland and riparian areas”*. - Lake Windermere OCP

FAIRMONT HOT SPRINGS
OFFICIAL COMMUNITY PLAN
BYLAW 1734, 2004
(Adopted December 3, 2004)

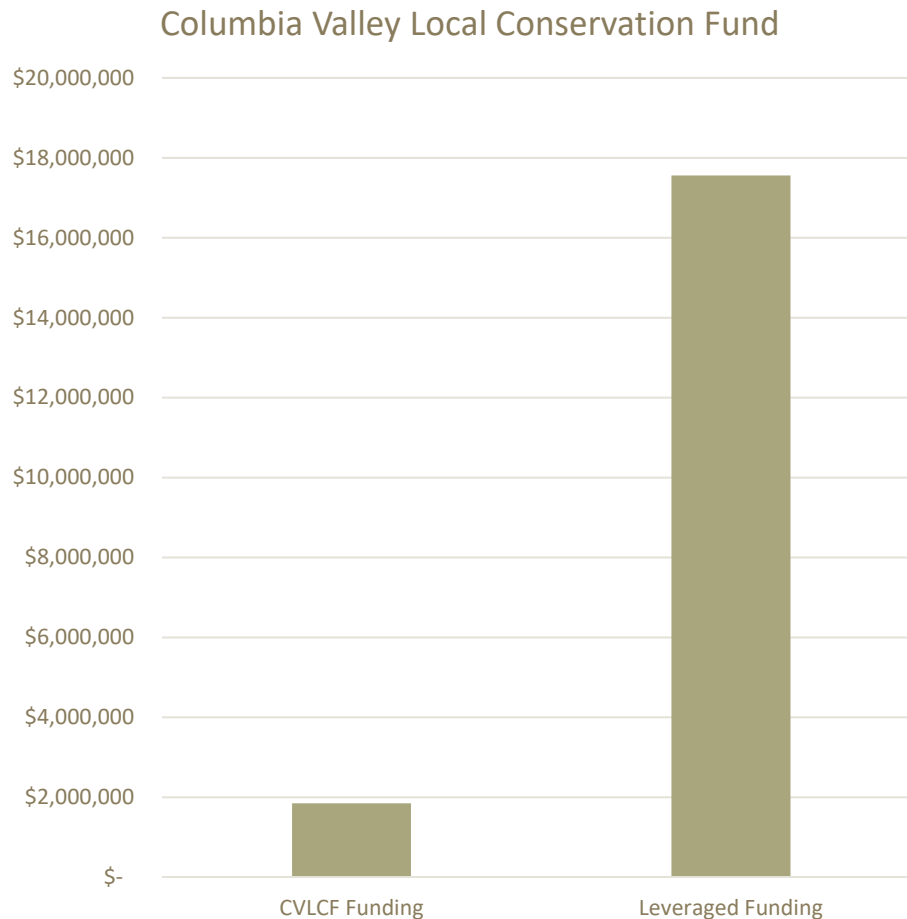
*“Protect and **enhance agricultural operations**”* -Fairmont Hot Springs Area OCP

*“Property owners and occupiers are required to control and manage **noxious / invasive plants** ...”* - Lake Windermere OCP

*Retain critical **wildlife habitat, wildlife corridors and ungulate winter range**”*
- Toby Benches OCP



Economic Benefits



- 1.8 million paid into Service
- 17 million in additional partner funding to these projects
- “First in” fund to demonstrate local support

Economic Benefits

Natural Resource Professionals

Foresters
Agrologists
Biologists
NGO Coordinators

Materials and Supplies

Culverts and pipes
Fencing and gates
Herbicide
Boat rentals
Fuel

Other Professionals

Graphic designers
Sign printers
Excavator drivers
Carpenters
Herbicide applicators
Boat drivers
Native plant nurseries





- Exploring opportunities to expand the fund in the Kootenays

Local Conservation Fund Expansion





Feasibility Assessment

- Is it Realistic?
- Is it Acceptable?
- Is it Possible?
- Do you have the commitment of partners and collaborators?

Step #1 Feasibility Research





Step #2

Public Opinion Polling



How to assess your most valuable assets:

- Quantitative Research – Telephone Polling
- Qualitative Research – Focus Groups
- Local Values and Priorities are Critical to success





Step #3

Coalition Building

Who is best positioned to be the proponent?

- Who needs to be involved?
- What do you want your partners to do?
- Who are your allies and opponents?





Step #4 Public support

Referendum or Alternate Approval process

- Working with Local Government – the roles of Board and Staff
- Timing





Step #5 The Campaign

- Public Opinion Leaders
- Campaign Cabinet – Engaging Volunteers
- The Message – What do you want people to support
- Elected Officials
- Voter Contact





Kootenay Region Research Study

Prepared for Kootenay Conservation Program

www.kootenayconservation.ca

March 1, 2019

Prepared by:

NRG Research Group

Kim Scott, Vice President
604.676.5641

Cam Mathewson, Senior Research Consultant
604.676.3994

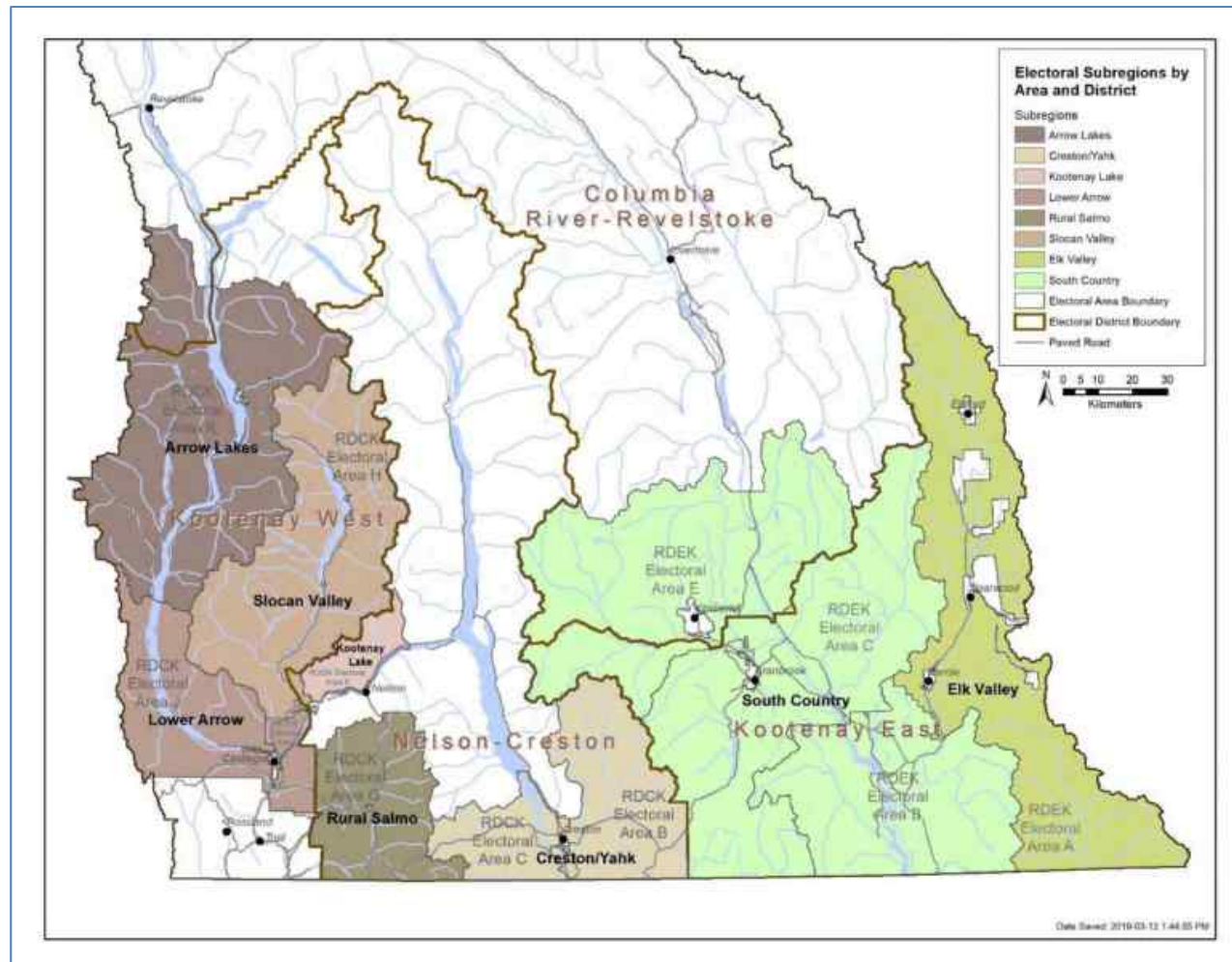


Suite 1380-1100 Melville Street
Vancouver, BC V6E 4A6





- 900 telephone surveys
- Similar questions to 2006 and 2012 surveys
- November, 2018

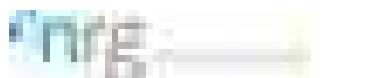


- Quotas set based on 2016 Census data
- Didn't include CSRD or RDKB
- Didn't include existing LCF areas

Methodology

Sub-region	Sub-region includes	Unweighted %	Unweighted n	Weighted %	Weighted n
Elk Valley	City of Fernie, District of Sparwood, District of Elkford, RDEK Area A	13%	118	13%	113
Kootenay Lake*	City of Nelson, Village of Kaslo, RDCK Area F	16%	145	15%	136
Slocan Valley	Village of New Denver, Village of Silverton, Village of Slocan, RDCK Area H	7%	60	5%	49
South Country	City of Cranbrook, City of Kimberley, RDEK Areas B, C and E	28%	256	36%	322
Arrow Lakes	Village of Nakusp, RDCK Area K	6%	51	3%	31
Creston/Yahk	Town of Creston, RDCK Areas B and C	11%	100	11%	103
Lower Arrow	City of Castlegar, RDCK Areas I and J	13%	120	13%	121
Rural Salmo	Village of Salmo, RDCK Area G	6%	50	3%	24

*Note: Columbia Valley sub-region of RDEK and Areas A, D and E of RDCK were not included in this polling since they already have local conservation funds.

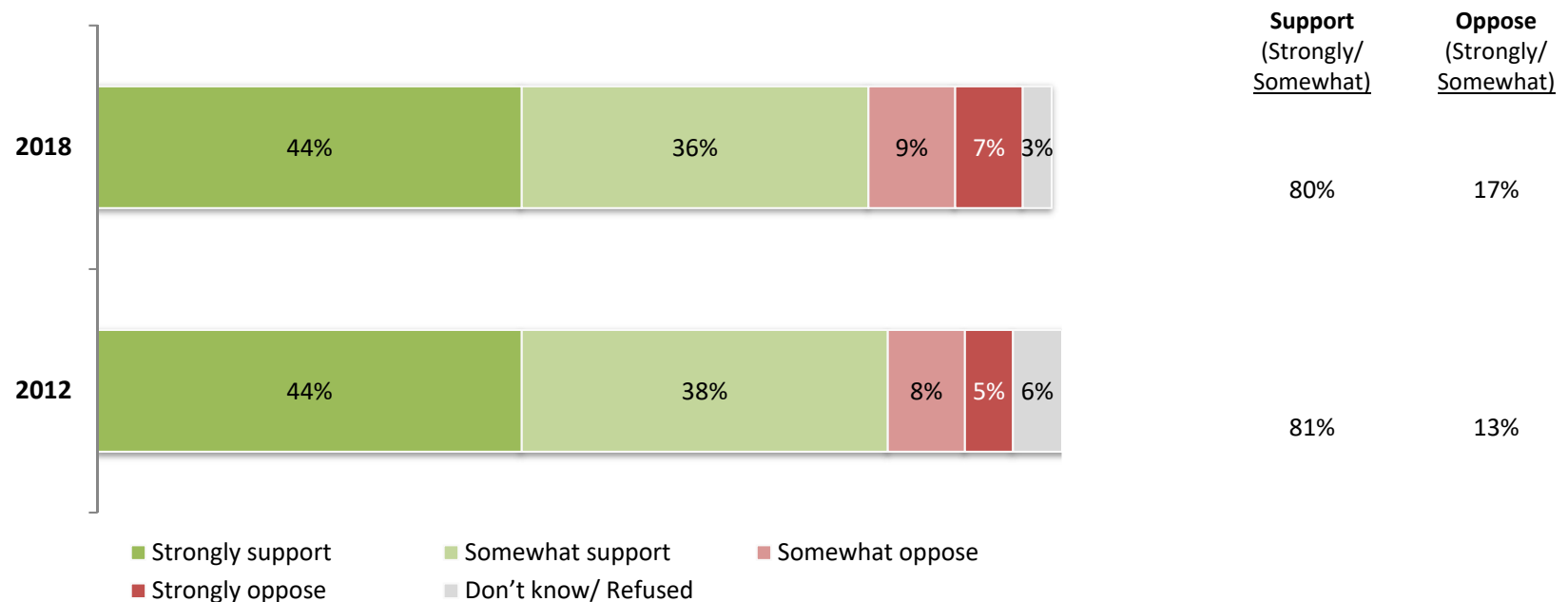


Support for Funding Conservation

- *Do you support or oppose the **idea of creating a dedicated conservation fund** in the entire Kootenay region to assist with environmental conservation initiatives?*
- *How likely would you be to contribute financially to the creation of such a conservation fund?*
- *How much do you support or oppose **the idea of creating a mandatory levy** to support conservation initiatives in the region?*

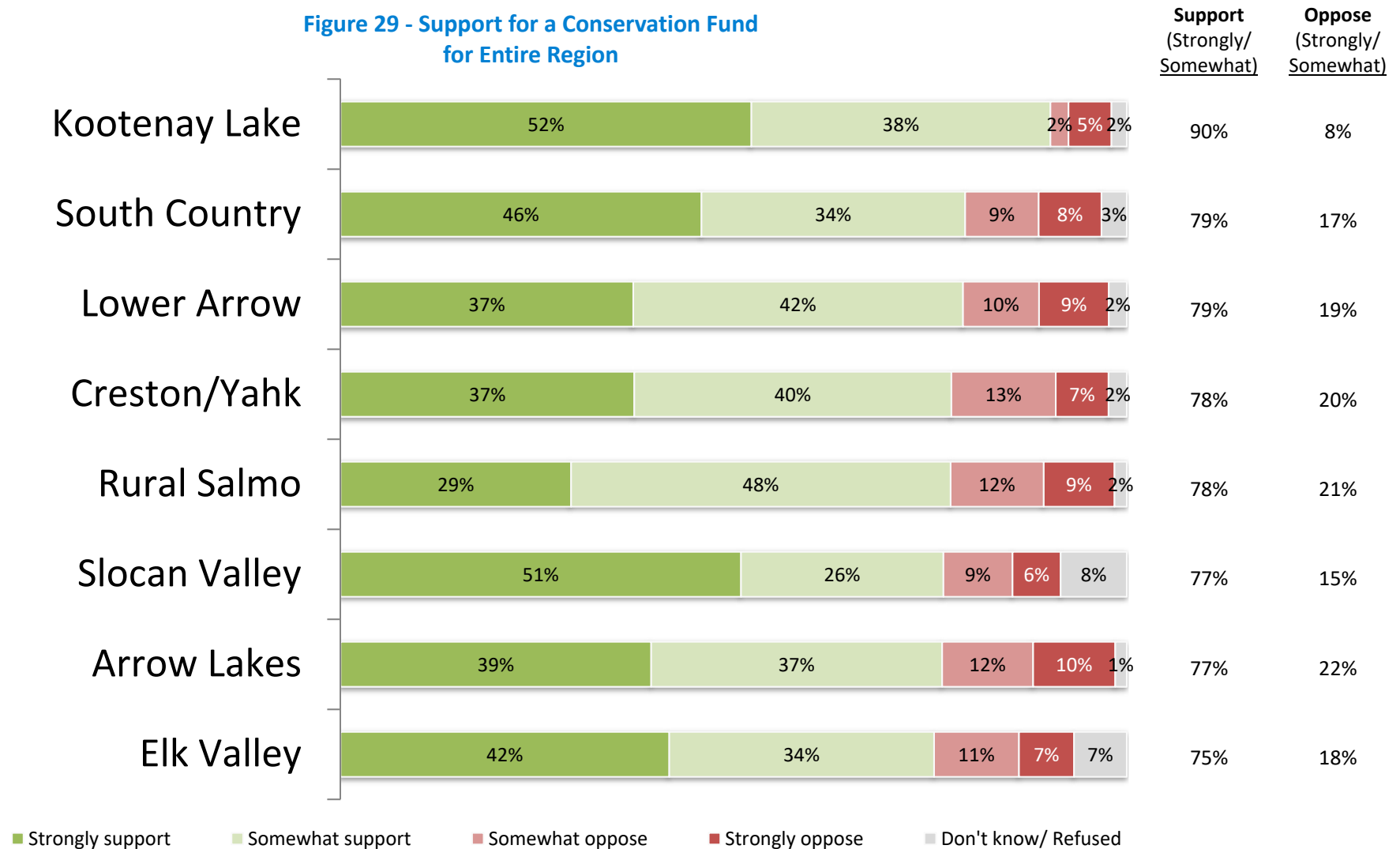
Support for Creating a Conservation Fund for Entire Kootenay Region

Figure 27 - Support for Idea of Creating a Dedicated Conservation Fund



Eight in ten support the idea of creating a dedicated conservation fund in the Kootenay region to assist with environmental conservation initiatives.

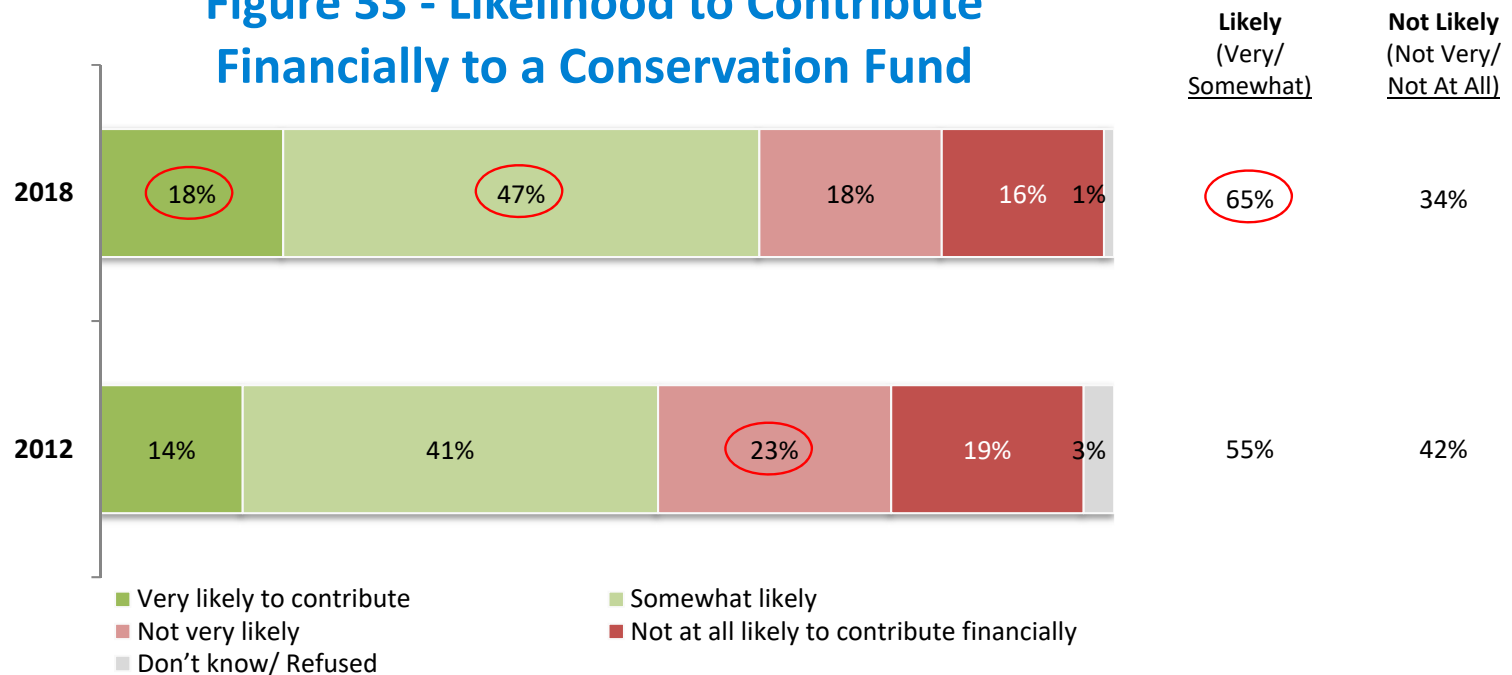
Support for Creating a Conservation Fund for Entire Kootenay Region (cont.)



By subregion, residents of the Kootenay Lake area (90%) are particularly likely to support this concept compared with residents of other communities.

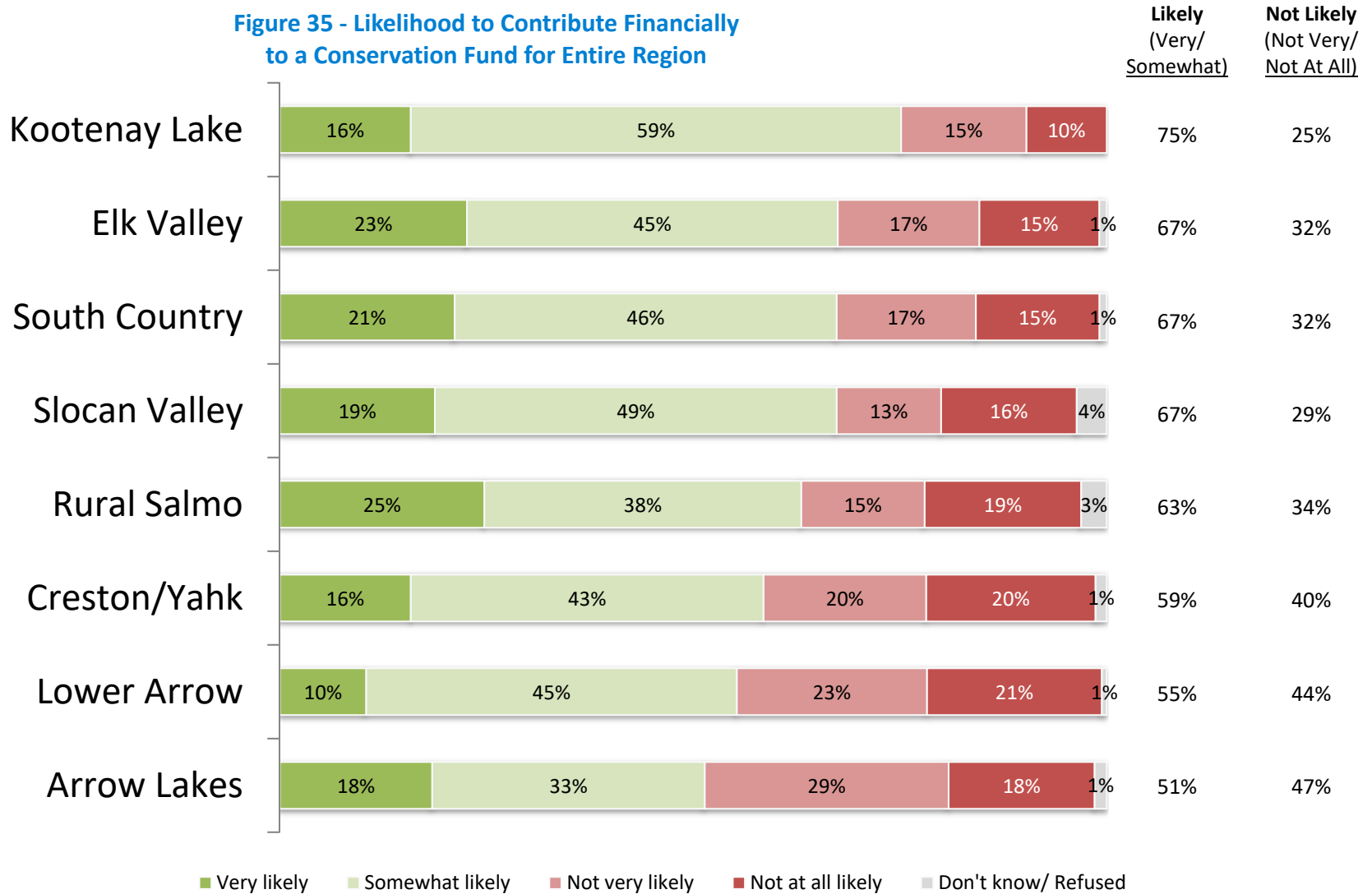
Likelihood to Contribute to a Conservation Fund

Figure 33 - Likelihood to Contribute Financially to a Conservation Fund



Nearly two-thirds of residents say that they would be willing to contribute financially to the creation of a dedicated conservation fund, up significantly from 55% in 2012

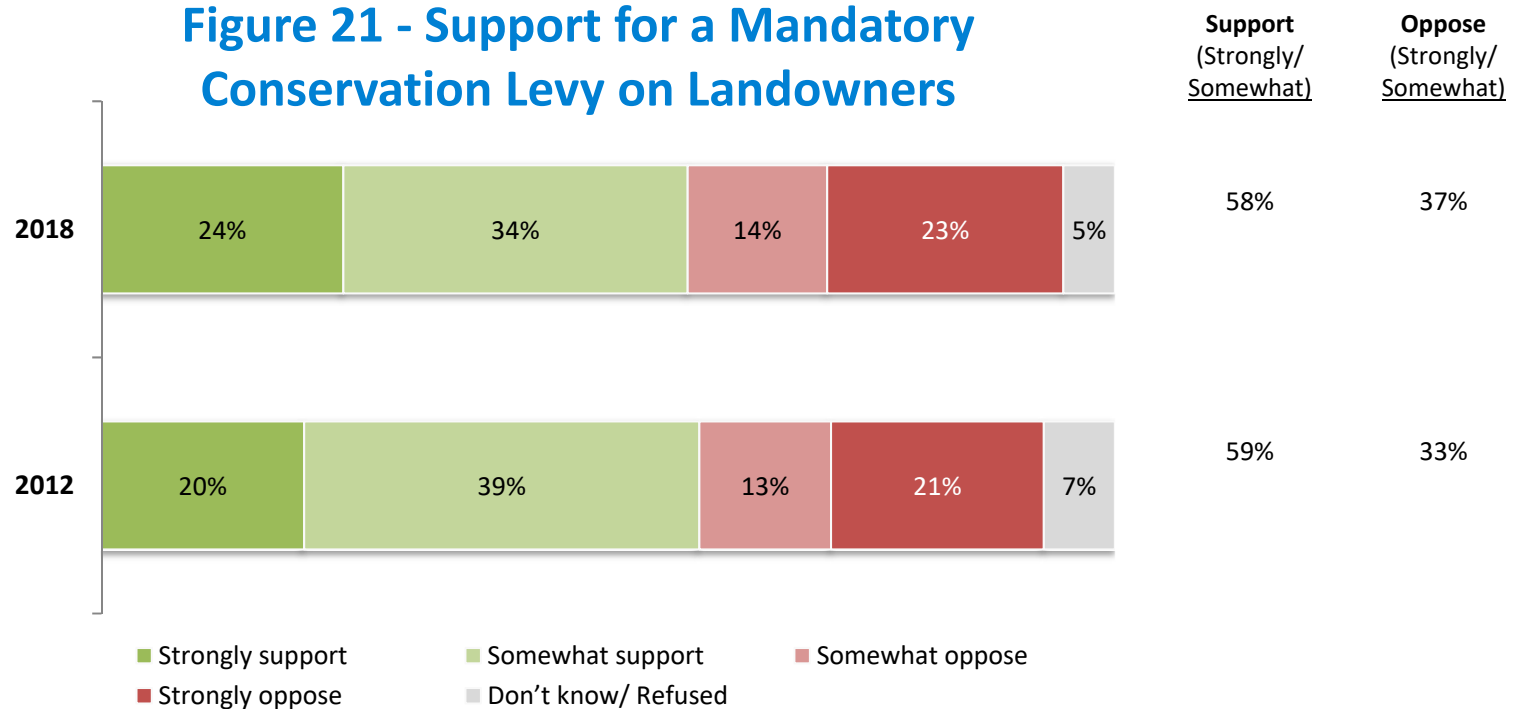
Likelihood to Contribute to a Conservation Fund (continued)



Residents of the Kootenay Lake sub-region(75%) are more likely than those in other regions

Support for a Mandatory Conservation Levy on Landowners

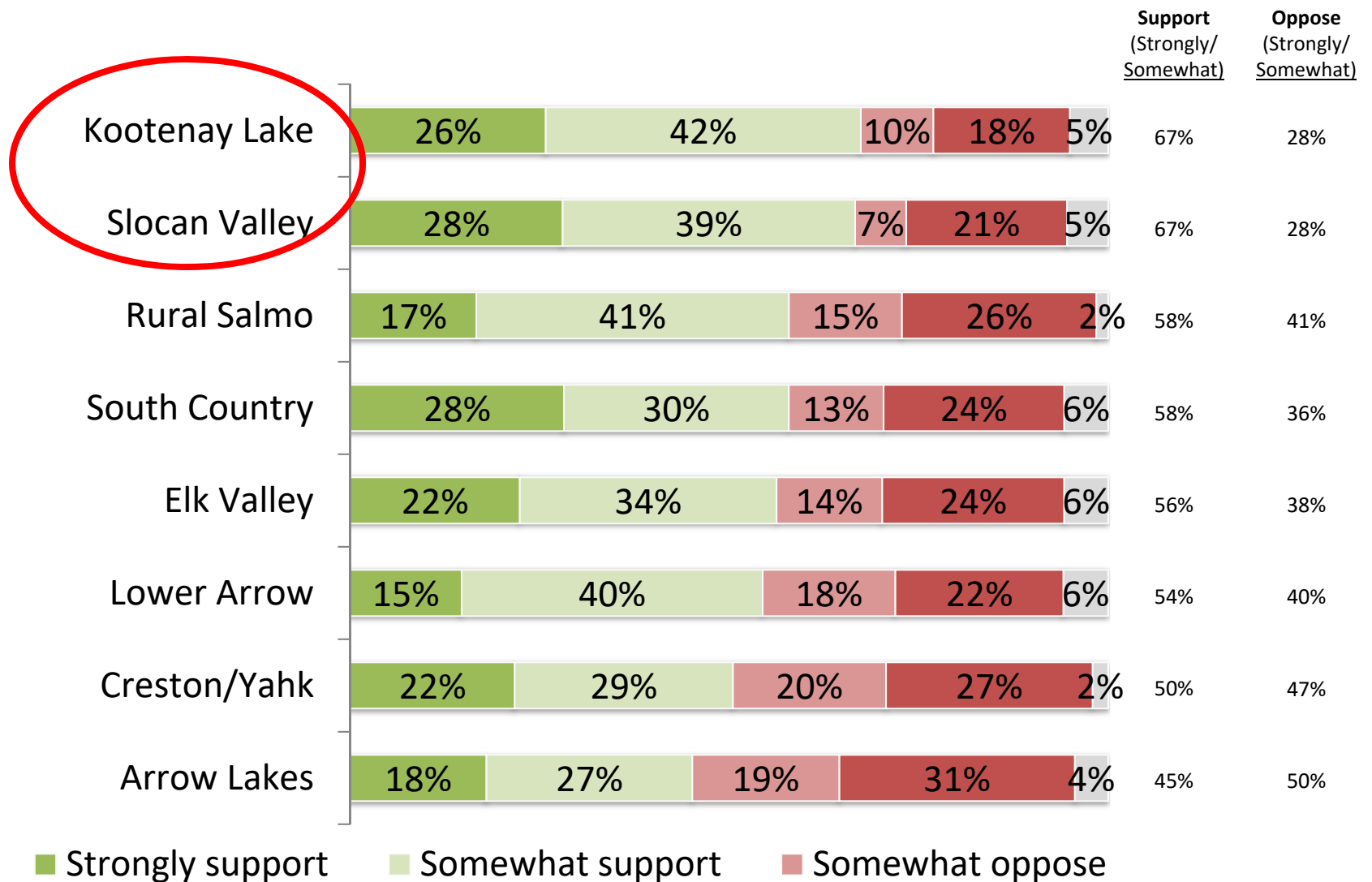
Figure 21 - Support for a Mandatory Conservation Levy on Landowners



~ six in ten residents support the idea of creating a mandatory levy to fund conservation initiatives in the region.



Support for a Mandatory Conservation Levy on Landowners (continued)



Support is highest in the Kootenay Lake and Slocan Valley

Support for a Mandatory Conservation Levy on Landowners



Photo: Internet; Heather Leschied; Marc Andre Beaucher



Activities to Support? (80% for each)

- ✓ Restoring Fish and Wildlife Habitats (96%)
- ✓ Protecting aquatic systems (96%)
- ✓ Improving drinking water quality
- ✓ Protecting open spaces
- ✓ Conserving working ranches and farmlands
- ✓ Limiting poorly planned growth and development
- ✓ Conserving private forest lands

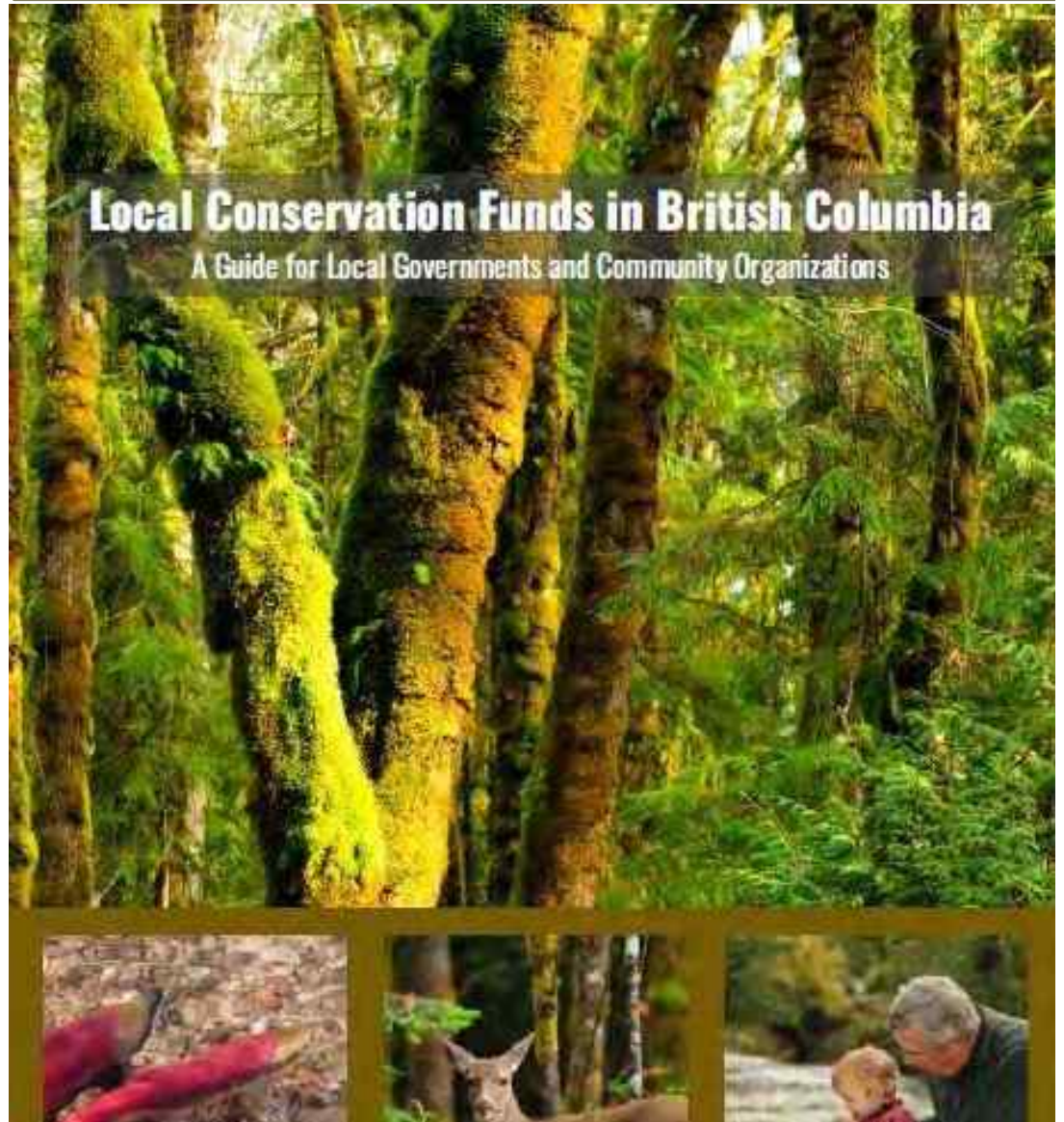


Photo: Larry Halverson



Local Conservation Fund Expansion

- Guidebook for establishing Local Conservation Fund is available online
- www.soscp.org





Questions?



www.kootenayconservation.ca

Photo: Larry Halverson